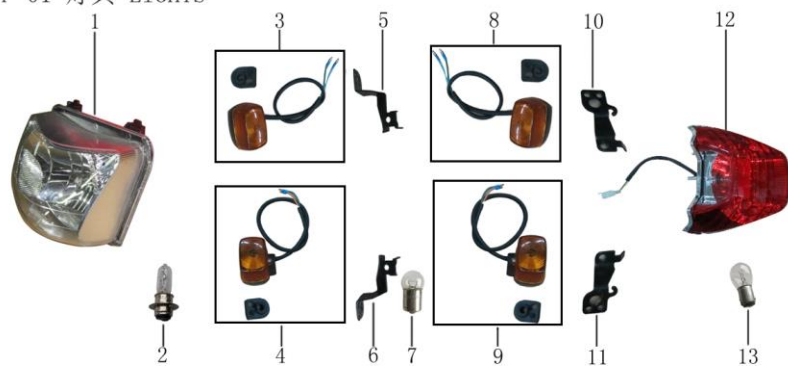


LF200GY-4



LF200GY-4 F-01 灯具 LIGHTS

F-01 灯具 LIGHTS



F01-01	XXXXXXXXXX	前照灯总成	Headlight Assy	32.85	PC	1	Y	LF200GY-4 F-01 LIGHTS
F01-02	XXXXXXXXXX	前照灯灯泡	Bulb	7.47	PC	1	Y	LF200GY-4 F-01 LIGHTS
F01-03	XXXXXXXXXX	前右转向灯	Winker, Front, RH	5.97	PC	1	Y	LF200GY-4 F-01 LIGHTS
F01-04	XXXXXXXXXX	前左转向灯	Winker, Front, LH	5.97	PC	1	Y	LF200GY-4 F-01 LIGHTS
F01-05	XXXXXXXXXX	前右转向灯支架	Bracket,Left Front Turn Signal	2.99	PC	1	Y	LF200GY-4 F-01 LIGHTS
F01-06	XXXXXXXXXX	前左转向灯支架	Bracket,Right Front Turn Signal	2.99	PC	1	Y	LF200GY-4 F-01 LIGHTS
F01-07	XXXXXXXXXX	转向灯泡	Bulb,Turn Signal	0.75	PC	1	Y	LF200GY-4 F-01 LIGHTS
F01-08	XXXXXXXXXX	后右转向灯	Signal Assy.,Left Rear Turn	5.97	PC	1	Y	LF200GY-4 F-01 LIGHTS
F01-09	XXXXXXXXXX	后左转向灯	Signal Assy.,Right Rear Turn	5.97	PC	1	Y	LF200GY-4 F-01 LIGHTS
F01-10	XXXXXXXXXX	后右转向灯支架	Bracket,Left Rear Turn Signal	2.99	PC	1	Y	LF200GY-4 F-01 LIGHTS
F01-11	XXXXXXXXXX	后左转向灯支架	Bracket,Right Rear Turn Signal	2.99	PC	1	Y	LF200GY-4 F-01 LIGHTS
F01-12	XXXXXXXXXX	尾灯	Light Unit,Tail	17.92	PC	1	Y	LF200GY-4 F-01 LIGHTS
F01-13	XXXXXXXXXX	尾灯灯泡	Bulb,Tail Light	1.79	PC	1	Y	LF200GY-4 F-01 LIGHTS

LF200GY-4 F-01-II 灯具 LIGHTS(250CC)

F-01-II 灯具 LIGHTS (250CC)



F01-II-01	XXXXXXXXXX	导流罩	Air Guide Sleeve Comp.	22.40	PC	1	Y	LF200GY-4 F-01-II LIGHTS(250CC)
F01-II-02	XXXXXXXXXX	前照灯总成	Headlight Assy	32.85	PC	1	Y	LF200GY-4 F-01-II LIGHTS(250CC)
F01-II-03	XXXXXXXXXX	前照灯灯泡	Bulb	7.47	PC	1	Y	LF200GY-4 F-01-II LIGHTS(250CC)
F01-II-04	XXXXXXXXXX	前照灯右安装支架	Headlight Bracket, RH	7.09	PC	1	Y	LF200GY-4 F-01-II LIGHTS(250CC)
F01-II-05	XXXXXXXXXX	前照灯左安装支架	Headlight Bracket, LH	7.09	PC	1	Y	LF200GY-4 F-01-II LIGHTS(250CC)
F01-II-06	XXXXXXXXXX	前右转向灯	Winker, Front, RH	13.44	PC	1	Y	LF200GY-4 F-01-II LIGHTS(250CC)
F01-II-07	XXXXXXXXXX	前左转向灯	Winker, Front, LH	13.44	PC	1	Y	LF200GY-4 F-01-II LIGHTS(250CC)
F01-II-08	XXXXXXXXXX	后右转向灯	Bracket,Left Rear Turn Signal	13.44	PC	1	Y	LF200GY-4 F-01-II LIGHTS(250CC)
F01-II-09	XXXXXXXXXX	后左转向灯	Bracket,Right Rear Turn Signal	13.44	PC	1	Y	LF200GY-4 F-01-II LIGHTS(250CC)
F01-II-10	XXXXXXXXXX	尾灯	Light Unit,Tail	17.92	PC	1	Y	LF200GY-4 F-01-II LIGHTS(250CC)
F01-II-11	XXXXXXXXXX	尾灯灯泡	Bulb,Tail Light	17.92	PC	1	Y	LF200GY-4 F-01-II LIGHTS(250CC)

LF200GY-4 F-02 仪表、拉索 METER & CABLE

F-02 仪表 & 拉索 METER & CABLE



F02-01	XXXXXXXXXX	仪表部件	Meter Assy.	57.50	PC	1	Y	LF200GY-4 F-02 METER & CABLE
F02-02	XXXXXXXXXX	仪表支架	Bracket,Meter	5.67	PC	1	Y	LF200GY-4 F-02 METER & CABLE
F02-03	XXXXXXXXXX	工字型胶圈	I-Rubber	2.99	PC	1	Y	LF200GY-4 F-02 METER & CABLE
F02-04	XXXXXXXXXX	离合拉索	Cable Comp,Clutch	5.38	PC	1	Y	LF200GY-4 F-02 METER & CABLE
F02-05	XXXXXXXXXX	风门拉索	Cable Comp,Choke	3.58	PC	1	Y	LF200GY-4 F-02 METER & CABLE
F02-06	XXXXXXXXXX	油门拉索部件	Cable Comp,Throttle	4.18	PC	1	Y	LF200GY-4 F-02 METER & CABLE
F02-07	XXXXXXXXXX	里程表软轴	Cable Comp,Speedometer	4.78	PC	1	Y	LF200GY-4 F-02 METER & CABLE
F02-08	XXXXXXXXXX	里程表软轴安装支架	Stay,Speedometer Cable	2.49	PC	1	Y	LF200GY-4 F-02 METER & CABLE
F02-09	XXXXXXXXXX	仪表部件(250CC)	Meter Assy.(250CC)	64.22	PC	1	Y	LF200GY-4 F-02 METER & CABLE

LF200GY-4 F-03 握把、开关 GRIP & SWITCH

F-03 握把 开关 GRIP & SWITCH



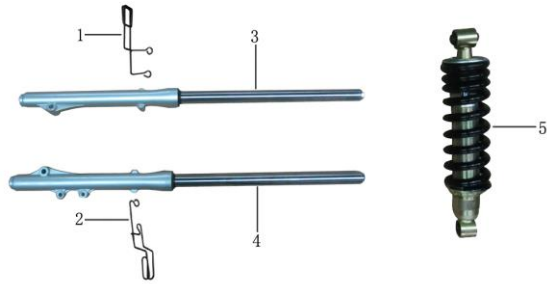
F03-01	XXXXXXXXXX	左后视镜	Rearview Mirror, LH	10.45	PC	1	Y	LF200GY-4	F-03	GRIP & SWITCH
F03-02	XXXXXXXXXX	右后视镜	Rearview Mirror, RH	10.45	PC	1	Y	LF200GY-4	F-03	GRIP & SWITCH
F03-03	XXXXXXXXXX	离合器手柄组合	Lever Set, Clutch	11.95	PC	1	Y	LF200GY-4	F-03	GRIP & SWITCH
F03-04	XXXXXXXXXX	离合器手柄	Lever, Clutch	5.97	PC	1	Y	LF200GY-4	F-03	GRIP & SWITCH
F03-05	XXXXXXXXXX	手把护罩卡座	Deck Hand Guard	4.48	PC	2	Y	LF200GY-4	F-03	GRIP & SWITCH
F03-06	XXXXXXXXXX	左手把护罩	Handle Guard,Left	17.92	PC	1	Y	LF200GY-4	F-03	GRIP & SWITCH
F03-07	XXXXXXXXXX	右手把护罩	Handle Guard,Right	17.92	PC	1	Y	LF200GY-4	F-03	GRIP & SWITCH
F03-08	XXXXXXXXXX	手把管	Pipe Comp,Steering Handle	17.92	PC	1	Y	LF200GY-4	F-03	GRIP & SWITCH
F03-09	XXXXXXXXXX	手把护罩装饰块	Hand Block Guard Decorated	2.99	PC	2	Y	LF200GY-4	F-03	GRIP & SWITCH
F03-10	XXXXXXXXXX	装饰头	Weight,Left Handle	2.99	PC	2	Y	LF200GY-4	F-03	GRIP & SWITCH
F03-11	XXXXXXXXXX	左握把	Grip, LH	2.54	PC	1	Y	LF200GY-4	F-03	GRIP & SWITCH
F03-12	XXXXXXXXXX	左手把开关	Handlebar Switch, LH	21.65	PC	1	Y	LF200GY-4	F-03	GRIP & SWITCH
F03-13	XXXXXXXXXX	右手把开关	Handlebar Switch, RH	8.21	PC	1	Y	LF200GY-4	F-03	GRIP & SWITCH
F03-14	XXXXXXXXXX	加油器座	Seat,Greaser	5.97	PC	1	Y	LF200GY-4	F-03	GRIP & SWITCH
F03-15	XXXXXXXXXX	油门握把组合	Grip Comp., Throttle	3.43	PC	1	Y	LF200GY-4	F-03	GRIP & SWITCH

LF200GY-4 F-04 方向柱 STEERING STEM
 F-04 方向柱 STEERING STEM



F04-01	XXXXXXXXX	侧反射器	Bracket,Side Reflector	2.24	PC	2	Y	LF200GY-4	F-04	STEERING STEM
F04-02	XXXXXXXXX	侧反射器支架	Side Reflector	2.99	PC	2	Y	LF200GY-4	F-04	STEERING STEM
F04-03	XXXXXXXXX	里程软轴线夹 I	Wire Clip I	1.19	PC	1	Y	LF200GY-4	F-04	STEERING STEM
F04-04	XXXXXXXXX	方向柱组合	Body Set,Steering Stem	61.23	PC	1	Y	LF200GY-4	F-04	STEERING STEM
F04-05	XXXXXXXXX	前制动油管线夹 I	Circlip, Hose I	1.19	PC	1	Y	LF200GY-4	F-04	STEERING STEM
F04-06	XXXXXXXXX	方向柱调整螺母	Adjust Nut,Steering Stem	2.24	PC	1	Y	LF200GY-4	F-04	STEERING STEM
F04-07	XXXXXXXXX	方向柱防尘盖	Dust Cap,Steering Stem	1.49	PC	2	Y	LF200GY-4	F-04	STEERING STEM
F04-08	XXXXXXXXX	轴承组合	Upper Bearing,Steering Stem	8.21	SET	1	Y	LF200GY-4	F-04	STEERING STEM
F04-09	XXXXXXXXX	下轴承组合	Lower Bearing,Steering Stem	8.21	SET	1	Y	LF200GY-4	F-04	STEERING STEM
F04-10	XXXXXXXXX	方向轴上孔塞	Hole Plug	0.75	PC	1	Y	LF200GY-4	F-04	STEERING STEM
F04-11	XXXXXXXXX	方向柱锁紧螺母	Acorn Nut,Steering Stem	1.49	PC	1	Y	LF200GY-4	F-04	STEERING STEM
F04-12	XXXXXXXXX	方向柱锁紧垫片(垫圈)	Washer,Steering Stem	0.52	PC	1	Y	LF200GY-4	F-04	STEERING STEM
F04-13	XXXXXXXXX	上联板	Plate, Connecting Upper	58.24	PC	1	Y	LF200GY-4	F-04	STEERING STEM
F04-14	XXXXXXXXX	前照灯左安装支架	Headlight Bracket, LH	2.24	PC	1	Y	LF200GY-4	F-04	STEERING STEM
F04-15	XXXXXXXXX	前照灯右安装支架	Headlight Bracket, RH	2.24	PC	1	Y	LF200GY-4	F-04	STEERING STEM

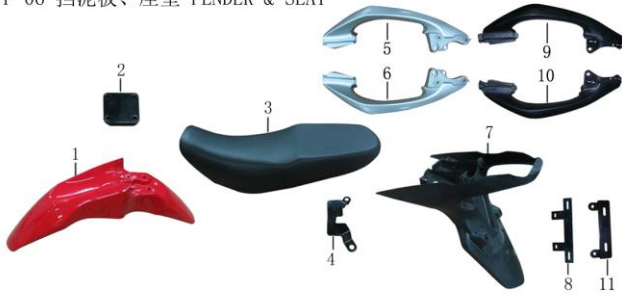
LF200GY-4 F-05 减震器 SHOCK ABSORBER
 F-05 减震器 SHOCK ABSORBER



F05-01	XXXXXXXX	里程软轴线夹 II	Wire Clip Ii	1.94	PC	1	Y	LF200GY-4 F-05 SHOCK ABSORBER
F05-02	XXXXXXXX	前制动油管线夹 II	Circlip, Hose Ii	1.94	PC	1	Y	LF200GY-4 F-05 SHOCK ABSORBER
F05-03	XXXXXXXX	前右减震器	Front Shock Absorber, RH	110.51	PC	1	Y	LF200GY-4 F-05 SHOCK ABSORBER
F05-04	XXXXXXXX	前左减震器	Front Shock Absorber, LH	110.51	PC	1	Y	LF200GY-4 F-05 SHOCK ABSORBER
F05-05	XXXXXXXX	后减震器	Absorber Assy.,Rear Shock	137.39	PC	1	Y	LF200GY-4 F-05 SHOCK ABSORBER

LF200GY-4 F-06 挡泥板、座垫 FENDER & SEAT

F-06 挡泥板、座垫 FENDER & SEAT



F06-01	XXXXXXXXX	前挡泥板	Front Fender	29.87	PC	1	Y	LF200GY-4	F-06	FENDER & SEAT
F06-02	XXXXXXXXX	前挡泥板内衬板	Front Fender Lining	5.97	PC	1	Y	LF200GY-4	F-06	FENDER & SEAT
F06-03	XXXXXXXXX	座垫	Seat	68.70	PC	1	Y	LF200GY-4	F-06	FENDER & SEAT
F06-04	XXXXXXXXX	座垫安装支架	Seat Mounting Bracket	4.48	PC	1	Y	LF200GY-4	F-06	FENDER & SEAT
F06-05	XXXXXXXXX	右后扶手	Rear Handrail, RH	44.80	PC	1	Y	LF200GY-4	F-06	FENDER & SEAT
F06-06	XXXXXXXXX	左后扶手	Rear Handrail, LH	44.80	PC	1	Y	LF200GY-4	F-06	FENDER & SEAT
F06-07	XXXXXXXXX	后挡泥板	Rear Fender	8.96	PC	1	Y	LF200GY-4	F-06	FENDER & SEAT
F06-08	XXXXXXXXX	后牌照支架	Bracket,Rear Registration Plate	5.67	PC	1	Y	LF200GY-4	F-06	FENDER & SEAT
F06-09	XXXXXXXXX	右后扶手(250CC)	Rear Handrail, RH (250CC)	35.09	PC	1	Y	LF200GY-4	F-06	FENDER & SEAT
F06-10	XXXXXXXXX	左后扶手(250CC)	Rear Handrail, LH (250CC)	35.09	PC	1	Y	LF200GY-4	F-06	FENDER & SEAT
F06-11	XXXXXXXXX	后牌照支架(250CC)	Bracket,Rear Registration Plate(250CC)	5.67	PC	1	Y	LF200GY-4	F-06	FENDER & SEAT

LF200GY-4 F-07 覆盖件 COVER

F-07 覆盖件 COVER



F07-01	XXXXXXXXXX	导流罩	Air Guide Sleeve Comp.	20.91	PC	1	Y	LF200GY-4 F-07 COVER
F07-02	XXXXXXXXXX	前照灯支架连接块	Connecting Block Of Headlight Bracket	8.96	PC	1	Y	LF200GY-4 F-07 COVER
F07-03	XXXXXXXXXX	右油箱装饰罩	Cover,Fuel Tank Right Decorative	20.91	PC	1	Y	LF200GY-4 F-07 COVER
F07-04	XXXXXXXXXX	左油箱装饰罩	Cover,Fuel Tank Left Decorative	20.91	PC	1	Y	LF200GY-4 F-07 COVER
F07-05	XXXXXXXXXX	右侧盖	Cover,Right Side	13.44	PC	1	Y	LF200GY-4 F-07 COVER
F07-06	XXXXXXXXXX	左侧盖	Cover,Left Side	16.43	PC	1	Y	LF200GY-4 F-07 COVER
F07-07	XXXXXXXXXX	右车体	Body Cover,Right	14.93	PC	1	Y	LF200GY-4 F-07 COVER
F07-08	XXXXXXXXXX	左车体	Body Cover,Left	14.93	PC	1	Y	LF200GY-4 F-07 COVER
F07-09	XXXXXXXXXX	尾盖	Cover Comp.,Tail (White W4)	31.36	PC	1	Y	LF200GY-4 F-07 COVER

LF200GY-4 F-08 油箱 FUEL TANK

F-08 油箱 FUEL TANK



F08-01	XXXXXXXX	全车锁	Lock Kit	55.26	SET	1	Y	LF200GY-4 F-08 FUEL TANK
F08-02	XXXXXXXX	油箱支撑胶套	Rubber Jacket,Fuel Tank Prop	1.49	PC	1	Y	LF200GY-4 F-08 FUEL TANK
F08-03	XXXXXXXX	油箱	Fuel Tank Comp.	171.74	PC	1	Y	LF200GY-4 F-08 FUEL TANK
F08-04	XXXXXXXX	油位传感器	Sensor, Fuel Level	7.47	PC	1	Y	LF200GY-4 F-08 FUEL TANK
F08-05	XXXXXXXX	油开关组合	Fuel Switch Assy.	5.23	PC	1	Y	LF200GY-4 F-08 FUEL TANK
F08-06	XXXXXXXX	油箱减震胶套	Pad,Fuel Tank Cushion	0.75	PC	1	Y	LF200GY-4 F-08 FUEL TANK
F08-07	XXXXXXXX	衬套	Washer,Flange	0.75	PC	1	Y	LF200GY-4 F-08 FUEL TANK

LF200GY-4 F-09 前轮 FRONT WHEEL
 F-09 前轮 FRONT WHEEL



F09-01	XXXXXXXXXX	前轮内胎	Tube,Front Wheel	14.93	PC	1	Y	LF200GY-4	F-09	FRONT WHEEL
F09-02	XXXXXXXXXX	前轮外胎	Tire,Front Wheel	109.02	PC	1	Y	LF200GY-4	F-09	FRONT WHEEL
F09-03	XXXXXXXXXX	前轮	Wheel,Front	112.00	PC	1	Y	LF200GY-4	F-09	FRONT WHEEL
F09-04	XXXXXXXXXX	前碟刹盘	Disk Comp.,Front Brake	38.83	PC	1	Y	LF200GY-4	F-09	FRONT WHEEL
F09-05	XXXXXXXXXX	前轮轴	Axle,Front Wheel	4.48	PC	1	Y	LF200GY-4	F-09	FRONT WHEEL
F09-06	XXXXXXXXXX	前轮左衬套	Washer,Flange	1.49	PC	1	Y	LF200GY-4	F-09	FRONT WHEEL
F09-07	XXXXXXXXXX	计速器	Speed Counter	11.05	PC	1	Y	LF200GY-4	F-09	FRONT WHEEL
F09-08	XXXXXXXXXX	碟刹部件	Disc-Brake Assy.,Front	106.03	PC	1	Y	LF200GY-4	F-09	FRONT WHEEL
F09-09	XXXXXXXXXX	碟刹摩擦片	Pad Comp.,Front Brake	7.47	PC	1	Y	LF200GY-4	F-09	FRONT WHEEL
F09-10	XXXXXXXXXX	右手柄	Lever Comp.,Right Steering Handle	7.47	PC	1	Y	LF200GY-4	F-09	FRONT WHEEL
F09-11	XXXXXXXXXX	制动开关	Switch, Brake	2.24	PC	1	Y	LF200GY-4	F-09	FRONT WHEEL

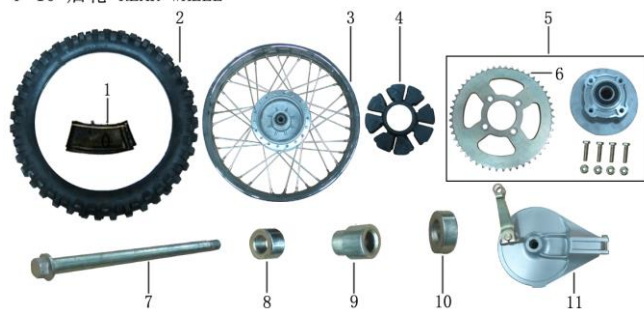
LF200GY-4 F-09-II 前轮 FRONT WHEEL (250CC)
 F-09-II 前轮 FRONT WHEEL (250CC)



F09-II-01	XXXXXXXXXX	前轮内胎	Tube,Front Wheel	14.93	PC	1	Y	LF200GY-4	F-09-II	FRONT WHEEL (250CC)
F09-II-02	XXXXXXXXXX	前轮外胎	Tire,Front Wheel	101.55	PC	1	Y	LF200GY-4	F-09-II	FRONT WHEEL (250CC)
F09-II-03	XXXXXXXXXX	前轮	Wheel,Front	104.54	PC	1	Y	LF200GY-4	F-09-II	FRONT WHEEL (250CC)
F09-II-04	XXXXXXXXXX	前碟刹盘	Disk Comp.,Front Brake	38.83	PC	1	Y	LF200GY-4	F-09-II	FRONT WHEEL (250CC)
F09-II-05	XXXXXXXXXX	前轮轴	Axle,Front Wheel	4.48	PC	1	Y	LF200GY-4	F-09-II	FRONT WHEEL (250CC)
F09-II-06	XXXXXXXXXX	前轮左衬套	Washer,Flange	1.49	PC	1	Y	LF200GY-4	F-09-II	FRONT WHEEL (250CC)
F09-II-07	XXXXXXXXXX	计速器	Speed Counter	11.05	PC	1	Y	LF200GY-4	F-09-II	FRONT WHEEL (250CC)
F09-II-08	XXXXXXXXXX	碟刹部件	Disc-Brake Assy.,Front	106.03	PC	1	Y	LF200GY-4	F-09-II	FRONT WHEEL (250CC)
F09-II-09	XXXXXXXXXX	碟刹摩擦片	Pad Comp.,Front Brake	7.47	SET	1	Y	LF200GY-4	F-09-II	FRONT WHEEL (250CC)
F09-II-10	XXXXXXXXXX	右手柄	Lever Comp.,Right Steering Handle	7.47	PC	1	Y	LF200GY-4	F-09-II	FRONT WHEEL (250CC)
F09-II-11	XXXXXXXXXX	制动开关	Switch, Brake	2.24	PC	1	Y	LF200GY-4	F-09-II	FRONT WHEEL (250CC)

LF200GY-4 F-10 后轮 REAR WHEEL

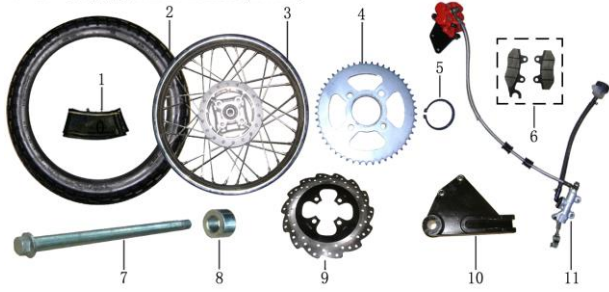
F-10 后轮 REAR WHEEL



F10-01	XXXXXXXXXX	后轮内胎	Tube,Rear Wheel	14.93	PC	1	Y	LF200GY-4	F-10	REAR WHEEL
F10-02	XXXXXXXXXX	后轮外胎	Tire,Rear Wheel	129.92	PC	1	Y	LF200GY-4	F-10	REAR WHEEL
F10-03	XXXXXXXXXX	后轮	Wheel,Rear	164.27	PC	1	Y	LF200GY-4	F-10	REAR WHEEL
F10-04	XXXXXXXXXX	后轮缓冲块	Rear Wheel Buffer	4.48	PC	1	Y	LF200GY-4	F-10	REAR WHEEL
F10-05	XXXXXXXXXX	链轮组合	Sprocket Comp.,Final Driven	50.78	PC	1	Y	LF200GY-4	F-10	REAR WHEEL
F10-06	XXXXXXXXXX	链轮	Sprocket,Final Driven	29.87	PC	1	Y	LF200GY-4	F-10	REAR WHEEL
F10-07	XXXXXXXXXX	后轮轴	Axle,Rear Wheel	5.97	PC	1	Y	LF200GY-4	F-10	REAR WHEEL
F10-08	XXXXXXXXXX	后轮左衬套	Rear Wheel Bush, LH	1.49	PC	1	Y	LF200GY-4	F-10	REAR WHEEL
F10-09	XXXXXXXXXX	链轮毂内衬套	Sprocket Hub Inner Bush	2.24	PC	1	Y	LF200GY-4	F-10	REAR WHEEL
F10-10	XXXXXXXXXX	后轮右衬套	Rear Wheel Bush, RH	1.49	PC	1	Y	LF200GY-4	F-10	REAR WHEEL
F10-11	XXXXXXXXXX	后制动器	Rear Brake	46.30	PC	1	Y	LF200GY-4	F-10	REAR WHEEL

LF200GY-4 F-10-II 后轮 REAR WHEEL (250CC)

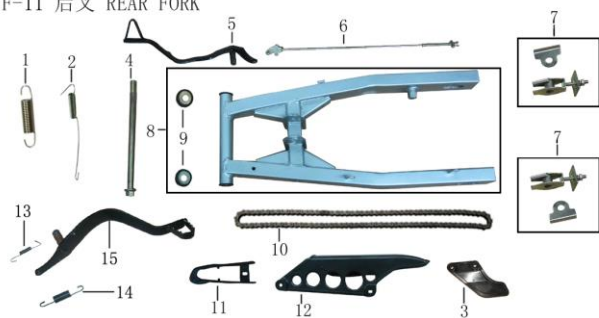
F-10-II 后轮 REAR WHEEL (250CC)



F10-II-01	XXXXXXXXXX	后轮内胎	Tube,Rear Wheel	14.93	PC	1	Y	LF200GY-4	F-10-II	REAR WHEEL (250CC)
F10-II-02	XXXXXXXXXX	后轮外胎	Tire,Rear Wheel	122.46	PC	1	Y	LF200GY-4	F-10-II	REAR WHEEL (250CC)
F10-II-03	XXXXXXXXXX	后轮	Wheel,Rear	209.07	PC	1	Y	LF200GY-4	F-10-II	REAR WHEEL (250CC)
F10-II-04	XXXXXXXXXX	链轮组合	Sprocket Comp.,Final Driven	29.87	PC	1	Y	LF200GY-4	F-10-II	REAR WHEEL (250CC)
F10-II-05	XXXXXXXXXX	挡圈	Collar	0.75	PC	1	Y	LF200GY-4	F-10-II	REAR WHEEL (250CC)
F10-II-06	XXXXXXXXXX	后碟刹制动蹄片	Pad Comp.,Rear Brake	7.47	SET	1	Y	LF200GY-4	F-10-II	REAR WHEEL (250CC)
F10-II-07	XXXXXXXXXX	后轮轴	Axle,Rear Wheel	5.97	PC	1	Y	LF200GY-4	F-10-II	REAR WHEEL (250CC)
F10-II-08	XXXXXXXXXX	后轮左衬套	Rear Wheel Bush, LH	1.49	PC	1	Y	LF200GY-4	F-10-II	REAR WHEEL (250CC)
F10-II-09	XXXXXXXXXX	后碟刹盘	Disk Comp.,Rear Brake	31.36	PC	1	Y	LF200GY-4	F-10-II	REAR WHEEL (250CC)
F10-II-10	XXXXXXXXXX	后制动钳连接板	Rear Brake Caliper Plate	19.41	PC	1	Y	LF200GY-4	F-10-II	REAR WHEEL (250CC)
F10-II-11	XXXXXXXXXX	后液压盘式制动器总成	Rear Hydraulic Disc Brake Assy	95.58	PC	1	Y	LF200GY-4	F-10-II	REAR WHEEL (250CC)

LF200GY-4 F-11 后叉 REAR FORK

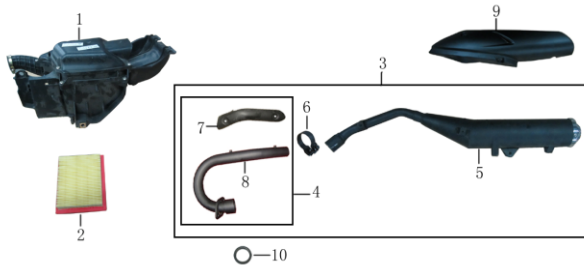
F-11 后叉 REAR FORK



F11-01	XXXXXXXX	后制动踏板复位簧	Return Spring,Rear Brake Pedal	0.75	PC	1	Y	LF200GY-4 F-11 REAR FORK
F11-02	XXXXXXXX	后制动开关拉簧	Extension Spring,Rear Brake Switch	0.45	PC	1	Y	LF200GY-4 F-11 REAR FORK
F11-03	XXXXXXXX	链条护罩	Chain Link Guard Shield	7.47	PC	1	Y	LF200GY-4 F-11 REAR FORK
F11-04	XXXXXXXX	平叉轴	Bolt, Rear Fork Pivot	5.97	PC	1	Y	LF200GY-4 F-11 REAR FORK
F11-05	XXXXXXXX	后制动踏板	Pedal Comp.,Rear Brake	19.41	PC	1	Y	LF200GY-4 F-11 REAR FORK
F11-06	XXXXXXXX	后制动拉杆	Rod Comp.,Rear Brake	2.99	PC	1	Y	LF200GY-4 F-11 REAR FORK
F11-07	XXXXXXXX	链条调节器	Adjuster,Drive Chain	8.96	PC	2	Y	LF200GY-4 F-11 REAR FORK
F11-08	XXXXXXXX	平叉焊接组合	Welding Comp.,Rear Fork	68.70	PC	1	Y	LF200GY-4 F-11 REAR FORK
F11-09	XXXXXXXX	平叉防尘盖	Cap,Rear Fork Dust Seal	1.49	PC	2	Y	LF200GY-4 F-11 REAR FORK
F11-10	XXXXXXXX	链条	Chain,Drive	22.40	PC	1	Y	LF200GY-4 F-11 REAR FORK
F11-11	XXXXXXXX	链条护卡	Slider,Drive Chain	7.47	PC	1	Y	LF200GY-4 F-11 REAR FORK
F11-12	XXXXXXXX	链盒	Case,Drive Chain	5.97	PC	1	Y	LF200GY-4 F-11 REAR FORK
F11-13	XXXXXXXX	后制动开关拉簧 (250CC)	Extension Spring,Rear Brake Switch (250CC)	0.45	PC	1	Y	LF200GY-4 F-11 REAR FORK
F11-14	XXXXXXXX	后制动踏板复位簧 (250CC)	Return Spring,Rear Brake Pedal (250CC)	0.75	PC	1	Y	LF200GY-4 F-11 REAR FORK
F11-15	XXXXXXXX	后制动踏板 (250CC)	Pedal Comp.,Rear Brake (250CC)	19.41	PC	1	Y	LF200GY-4 F-11 REAR FORK

LF200GY-4 F-12 排气消声器、空气滤清器 MUFFLER & AIR CLEANER

F-12 排气消声器、空气滤清器 MUFFLER & AIR CLEANER



F12-01	XXXXXXXX	空滤器	Air Cleaner Comp.	53.02	PC	1	Y	LF200GY-4	F-12	MUFFLER & AIR CLEANER
F12-02	XXXXXXXX	空滤器滤芯	Element,Air Cleaner	7.47	PC	1	Y	LF200GY-4	F-12	MUFFLER & AIR CLEANER
F12-03	XXXXXXXX	消声器部件	Muffler Assy.,Exhaust	101.55	PC	1	Y	LF200GY-4	F-12	MUFFLER & AIR CLEANER
F12-04	XXXXXXXX	排气管组合(消声器前段)	Front Muffler	31.36	PC	1	Y	LF200GY-4	F-12	MUFFLER & AIR CLEANER
F12-05	XXXXXXXX	消声器体(消声器后段)	Rear Section Muffler	69.69	PC	1	Y	LF200GY-4	F-12	MUFFLER & AIR CLEANER
F12-06	XXXXXXXX	抱箍	Clamp	2.24	PC	1	Y	LF200GY-4	F-12	MUFFLER & AIR CLEANER
F12-07	XXXXXXXX	防烫罩(消声器前装饰罩)	Muffler Before The Decorative Cover	6.72	PC	1	Y	LF200GY-4	F-12	MUFFLER & AIR CLEANER
F12-08	XXXXXXXX	排气管	Exhaust Pipe	24.64	PC	1	Y	LF200GY-4	F-12	MUFFLER & AIR CLEANER
F12-09	XXXXXXXX	消声器装饰罩	Muffler Shroud	14.93	PC	1	Y	LF200GY-4	F-12	MUFFLER & AIR CLEANER
F12-10	XXXXXXXX	排气口密封垫	Gasket,Exhaust Opening	0.45	PC	1	Y	LF200GY-4	F-12	MUFFLER & AIR CLEANER

LF200GY-4 F-13 电器 ELECTRICAL ELEMENTS

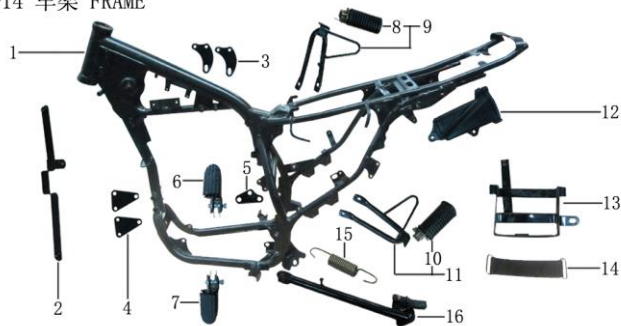
F-13 电器 ELECTRICAL ELEMENTS



F13-01	XXXXXXXX	主电缆	Harness,Wire	38.08	PC	1	Y	LF200GY-4	F-13	ELECTRICAL ELEMENTS
F13-02	XXXXXXXX	蓄电池	Battery Assy.	61.98	PC	1	Y	LF200GY-4	F-13	ELECTRICAL ELEMENTS
F13-03	XXXXXXXX	喇叭	Horn Assy.	7.17	PC	1	Y	LF200GY-4	F-13	ELECTRICAL ELEMENTS
F13-04	XXXXXXXX	点火线圈	Coil Assy.,Ignition	0.00	PC	1	Y	LF200GY-4	F-13	ELECTRICAL ELEMENTS
F13-05	XXXXXXXX	点火器	Unit Assy.C.D.I.	0.00	PC	1	Y	LF200GY-4	F-13	ELECTRICAL ELEMENTS
F13-06	XXXXXXXX	启动继电器	Relay Assy.,Starting	0.00	PC	1	Y	LF200GY-4	F-13	ELECTRICAL ELEMENTS
F13-07	XXXXXXXX	调压整流器	Rectifier Regulate Assy.	0.00	PC	1	Y	LF200GY-4	F-13	ELECTRICAL ELEMENTS
F13-08	XXXXXXXX	闪光器	Flasher	5.23	PC	1	Y	LF200GY-4	F-13	ELECTRICAL ELEMENTS
F13-09	XXXXXXXX	后制动开关	Switch Assy.,Rear Brake	2.24	PC	1	Y	LF200GY-4	F-13	ELECTRICAL ELEMENTS

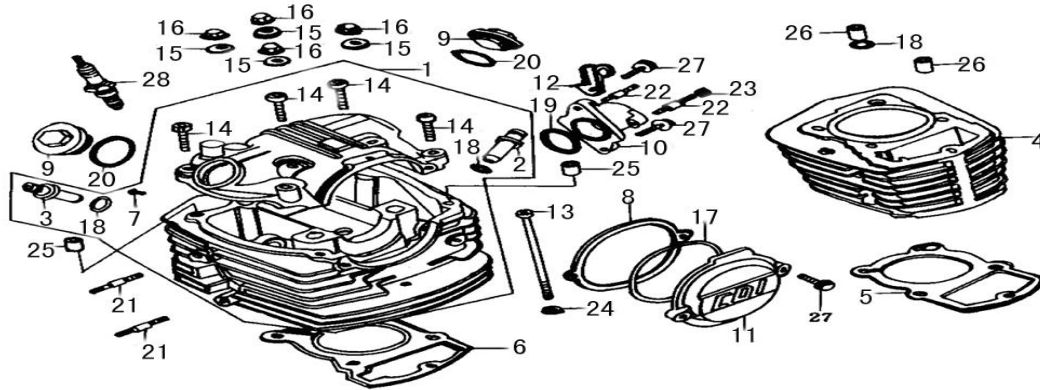
LF200GY-4 F-14 车架 FRAME

F-14 车架 FRAME

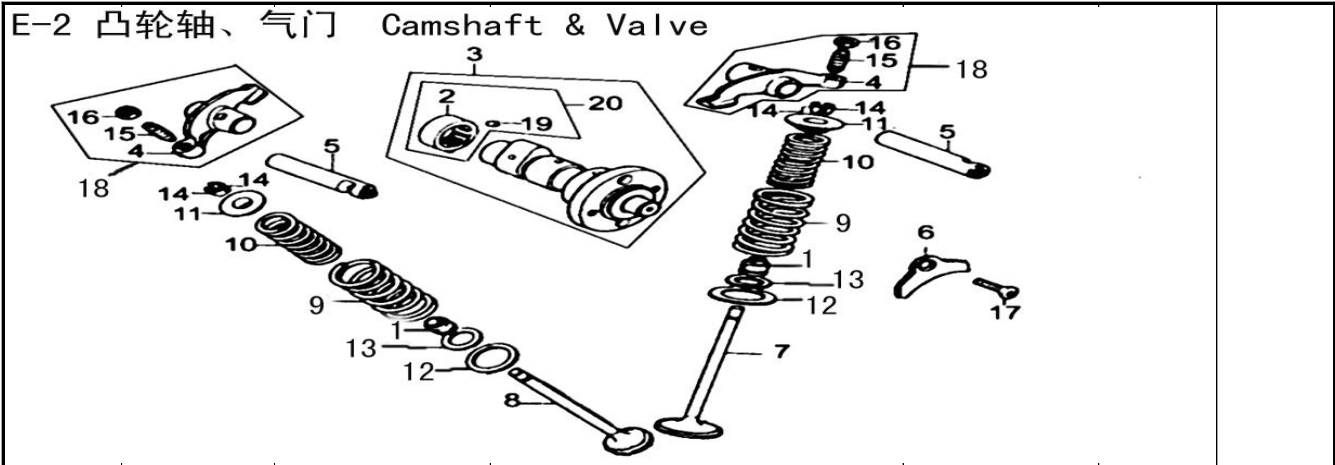


F14-01	XXXXXXXX	车架焊接部件	Body Comp.,Frame	283.74	PC	1	Y	LF200GY-4 F-14 FRAME
F14-02	XXXXXXXX	油箱装饰罩支架	Bracket Of Fuel Tank's Decorative Cover	4.78	PC	1	Y	LF200GY-4 F-14 FRAME
F14-03	XXXXXXXX	发动机上连接板	Plate,Upper Engine Hanger	7.47	PC	2	Y	LF200GY-4 F-14 FRAME
F14-04	XXXXXXXX	发动机前连接板	Plate,Front Engine Hanger	5.97	PC	2	Y	LF200GY-4 F-14 FRAME
F14-05	XXXXXXXX	发动机后连接板	Plate,Rear Engine Hanger	1.49	PC	1	Y	LF200GY-4 F-14 FRAME
F14-06	XXXXXXXX	右主搁脚部件	Step Assy.Right	8.96	PC	1	Y	LF200GY-4 F-14 FRAME
F14-07	XXXXXXXX	左主搁脚部件	Step Assy.Left	8.96	PC	1	Y	LF200GY-4 F-14 FRAME
F14-08	XXXXXXXX	右副搁脚胶蹬	Step,Right Pillion	5.97	PC	1	Y	LF200GY-4 F-14 FRAME
F14-09	XXXXXXXX	右副搁脚	Step Assy.,Right Pillion	8.21	PC	1	Y	LF200GY-4 F-14 FRAME
F14-10	XXXXXXXX	左副搁脚胶蹬	Step,Left Pillion	5.97	PC	1	Y	LF200GY-4 F-14 FRAME
F14-11	XXXXXXXX	左副搁脚	Step Assy.,Left Pillion	8.21	PC	1	Y	LF200GY-4 F-14 FRAME
F14-12	XXXXXXXX	工具箱	Tool Box	7.47	PC	1	Y	LF200GY-4 F-14 FRAME
F14-13	XXXXXXXX	蓄电池支架组合	Bracket,Battery	8.96	PC	1	Y	LF200GY-4 F-14 FRAME
F14-14	XXXXXXXX	蓄电池箍带	Band,Battery	2.24	PC	1	Y	LF200GY-4 F-14 FRAME

E-1 气缸体、气缸头 Cylinder Block & Cylinder Head

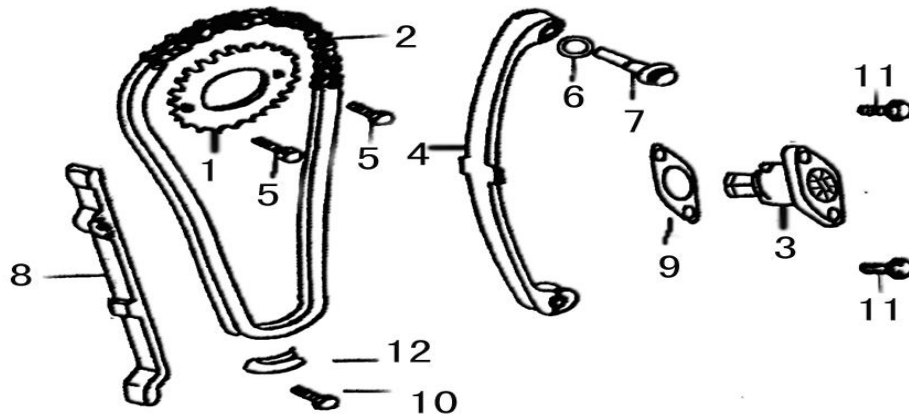


Id	PartNo	PartName	Description	ORDER QTY	Price	Unit
E01-01	1711012210	气缸头组合	Cylinder Head Comp.		0	PCS
E01-02	1711012214	进气门导管	Intake Valve Guide		0	PCS
E01-03	1711012215	排气门导管	Exhaust Valve Guide		0	PCS
E01-04	1711012110	气缸体组合	Cylinder Block Comp.		0	PCS
E01-05	1711012121	气缸体密封垫	Cylinder Block Gasket		0	PCS
E01-06	1711012220	气缸头密封垫组合	Cylinder Head Gasket		0	PCS
E01-07	1711012217	气缸头堵头	Cylinder Head Plug		0	PCS
E01-08	1711012245	缸头左盖密封垫	Cylinder Head Cover Gasket, LH		0	PCS
E01-09	1712015463	机油滤网盖	Oil Filter Screen Cover		0	PCS
E01-10	1712017310	进气管组合	Intake Pipe Set		0	PCS
E01-11	1711012242	气缸头左盖	Cylinder Head Cover, LH		0	PCS
E01-12	1711034931	点火线圈线夹	Ignition Coil Wire Clamp		0	PCS
E01-13	1711012237	气缸头螺钉 (M6x	Bolt M6x 110		0	PCS
E01-14	GB/T16674	螺栓M6x 35	Bolt M6x 35		0	PCS
E01-15	1711012345	气缸螺栓铜垫圈	Cylinder Bolt Copper Washer		0	PCS
E01-16	1711012313	发动机盖形螺母M8	Cap Nut M8		0	PCS
E01-17	1711012247	缸头左盖O型圈 (7	Cylinder Head Cover O-Ring, LH		0	PCS
E01-18	1712012216	导管O型圈 (10x 1.6	Guide O-Ring 10x 1.6		0	PCS
E01-19	1712017321	进气管O型圈II (33	Inlet Pipe O-Ring 33.5x 3		0	PCS
E01-20	1712012246	气门盖O型圈 (35x	Valve Cover O-Ring 35x 3		0	PCS
E01-21	GB/T899	螺柱M6x 35	Bolt M6x 35		0	PCS
E01-22	GB/T899	螺柱M6x 25	Bolt M6x 25		0	PCS
E01-23	GB/T6178	螺母M6	Nut M6		0	PCS
E01-24	1711012236	气缸头垫圈III	Cylinder Head Washer III		0	PCS
E01-25	1711012318	气缸头盖定位销 (8	Cylinder Head Cover Dowel Pin		0	PCS
E01-26	1712012218	气缸头定位销 (10x	Cylinder Head Dowel Pin 10x20		0	PCS
E01-27	GB/T16674	螺栓M6x 20	Bolt M6x 20		0	PCS
E01-28	1712034210	火花塞 NGK D8EA	Spark Plug (Ngk D8ea)		0	PCS

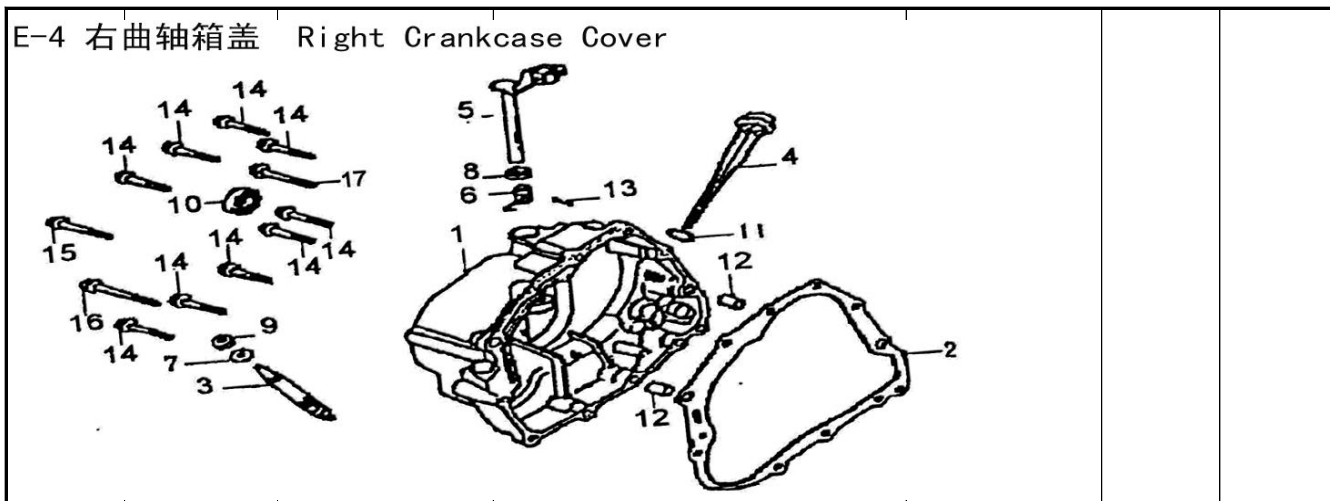


Id	PartNo	PartName	Description	ORDER QTY	Price	Unit
E02-01	1712014730	挡油罩	Valve Stem Oil Seal		0	PCS
E02-02	1711014113	凸轮衬套	Camshaft Bush		0	PCS
E02-03	1711014100	凸轮轴装配组合	Camshaft Assy		0	PCS
E02-04	1711014411	气门摇臂	Rocker Arm		0	PCS
E02-05	1711014413	摇臂轴	Rocker Arm Shaft		0	PCS
E02-06	1711014137	配气凸轮轴挡板	Camshaft Stopper		0	PCS
E02-07	1711014710	进气门	Intake Valve		0	PCS
E02-08	1711014720	排气门	Exhaust Valve		0	PCS
E02-09	1711014755	气门外弹簧	Valve Outer Spring		0	PCS
E02-10	1711014756	气门内弹簧	Valve Inner Spring		0	PCS
E02-11	1711014751	气门弹簧上座	Valve Spring Retainer		0	PCS
E02-12	1711014753	气门外弹簧座	Valve Outer Spring Seat		0	PCS
E02-13	1711014754	气门内弹簧座	Valve Inner Spring Seat		0	PCS
E02-14	1711014752	气门锁夹	Valve Split Cone		0	PAIR
E02-15	1712014415	气门间隙调节螺钉	Valve Clearance Adjusting Screw		0	PCS
E02-16	1712014416	气门间隙调节螺母	Valve Clearance Adjusting Nut		0	PCS
E02-17	GB/T819.1	螺钉M6x 16	Screw M6x 16		0	PCS
E02-18	1711014410	摇臂装配组合	Rocker Arm Assy		0	PCS
E02-19	1711014162	衬套定位销	Bush Pin		0	PCS
E02-20	1711014160	凸轮轴衬套组合	Camshaft Bushing Set		0	PCS

E-3 正时链条、张紧装置 Timing Chain & Tensioner Device

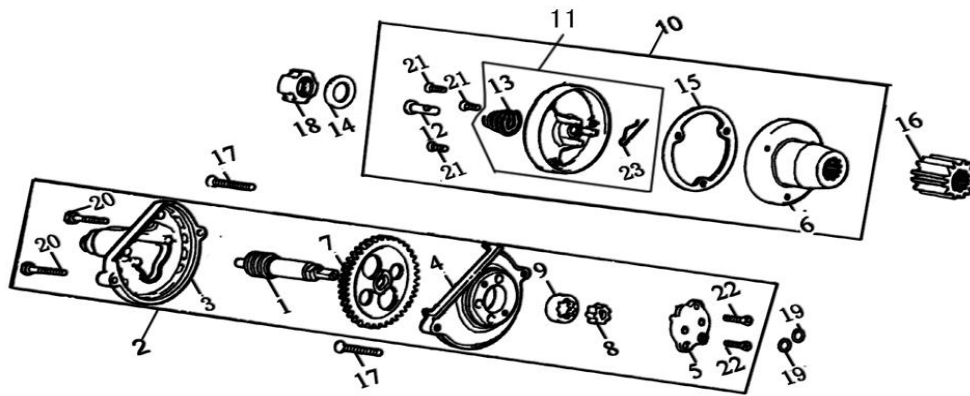


Id	PartNo	PartName	Description	ORDER QTY	Price	Unit
E03-01	1711014321	正时从动链轮	Timing Driven Sprocket		0	PCS
E03-02	1711014350	正时链条	Timing Chain		0	PCS
E03-03	1711014500	张紧器总成	Tensioner Assy		0	PCS
E03-04	1711014650	张紧板	Tensioning Plate		0	PCS
E03-05	GB/T5783	螺栓M6x 10	Bolt M6x 10		0	PCS
E03-06	1711014662	张紧板垫圈	Tensioning Plate Washer		0	PCS
E03-07	1711014661	张紧板螺钉	Tensioning Plate Screw		0	PCS
E03-08	1711014610	导向板	Guide		0	PCS
E03-09	1711014519	张紧器密封垫	Tensioner Gasket		0	PCS
E03-10	GB/T5783	螺栓M6x 20	Bolt M6x 20		0	PCS
E03-11	GB/T16674	螺栓M6x 20	Bolt M6x 20		0	PCS
E03-12	1711014360	正时链条限位板组	Timing Chain Limited Plate Comp.		0	PCS



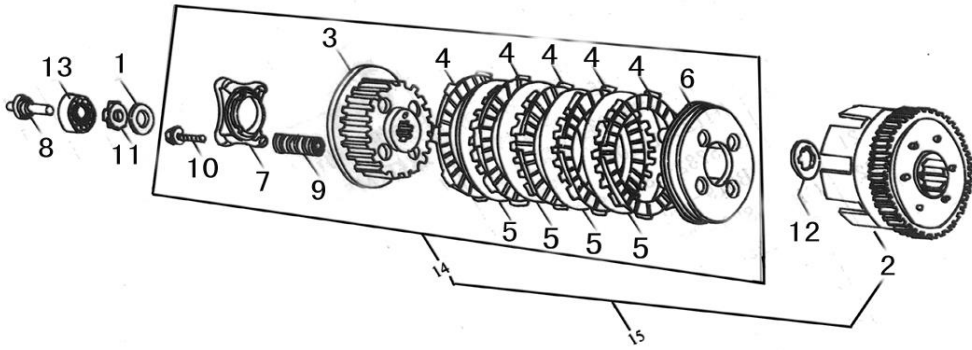
Id	PartNo	PartName	Description	ORDER QTY	Price	Unit
E04-01	1711011310	右曲轴箱盖组合	Crankcase Cover, RH		0	PCS
E04-02	1711011319	右曲轴箱盖密封垫	Crankcase Cover Gasket, RH		0	PCS
E04-03	1711025911	转速输出轴	Output Speed Shaft		0	PCS
E04-04	1711015611	机油尺	Dipstick		0	PCS
E04-05	1711022810	离合器操纵杆组合	Clutch Lever Comp.		0	PCS
E04-06	1711022821	离合器操纵杆弹簧	Clutch Lever Spring		0	PCS
E04-07	1712025913	转速输出轴垫圈	Speed Output Shaft Washer		0	PCS
E04-08	1711022840	离合器操纵杆油封	Clutch Lever Oil Seal		0	PCS
E04-09	1712025920	转速输出轴油封	Speed Output Shaft Oil Seal		0	PCS
E04-10	1711027190	起动轴油封	Starting Shaft Oil Seal		0	PCS
E04-11	1711015612	机油尺O型圈	Dipstick O-Ring		0	PCS
E04-12	1712011318	右曲轴箱盖定位销	Crankcase Cover Dowel Pin, RH		0	PCS
E04-13	1711022825	离合器操纵杆定位销	Clutch Lever Detent Pin		0	PCS
E04-14	GB/T16674	螺栓M6x 40	Bolt M6x 40		0	PCS
E04-15	GB/T16674	螺栓M6x 35	Bolt M6x 35		0	PCS
E04-16	GB/T16674	螺栓M6x 50	Bolt M6x 50		0	PCS
E04-17	GB/T16674	螺栓M6x 25	Bolt M6x 25		0	PCS

E-5 机油泵、机油滤清器 Oil Pump & Oil Filter



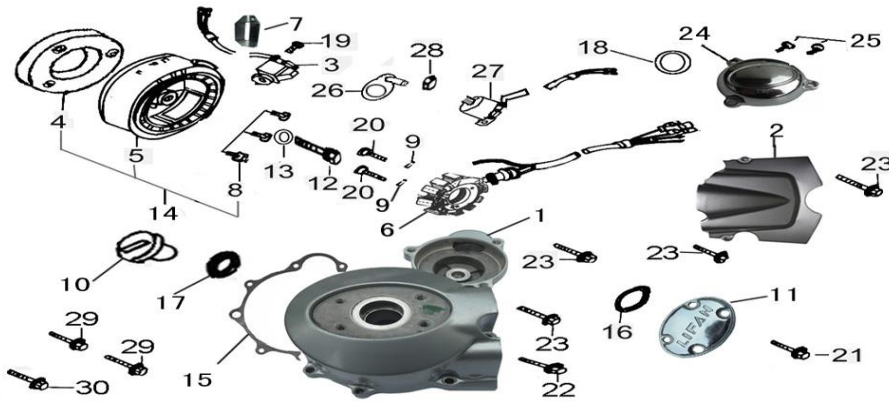
Id	PartNo	PartName	Description	ORDER QTY	Price	Unit
E05-01	1711015116	机油泵轴	Oil Pump Shaft		0	PCS
E05-02	1711015100	机油泵总成	Oil Pump Assy		0	PCS
E05-03	1712015119	机油泵齿轮盖	Oil Pump Gear Cover		0	PCS
E05-04	1712015111	机油泵体	Oil Pump Body		0	PCS
E05-05	1712015112	机油泵盖	Oil Pump Cover		0	PCS
E05-06	1712015420	机油滤清器转子组	Oil Filter Rotator Comp.		0	PCS
E05-07	1711015121	机油泵从动齿轮	Oil Pump Driven Gear		0	PCS
E05-08	1712015114	机油泵内转子	Oil Pump Inner Rotor		0	PCS
E05-09	1712015115	机油泵外转子	Oil Pump Outer Rotor		0	PCS
E05-10	1712015410	机油滤清器总成	Oil Filter Assy		0	SETS
E05-11	1712015414	机油滤清器盖	Filter Cover		0	PCS
E05-12	1712015431	曲轴通油管	Crankshaft Oil Pipe		0	PCS
E05-13	1712015432	曲轴通油管弹簧	Crankshaft Oil Pipe Spring		0	PCS
E05-14	1712022632	初级主动齿轮止退垫圈	Primary Drive Gear Thrust Washer		0	PCS
E05-15	1712015415	机油滤清器盖密封垫	Oil Filter Cover Gasket		0	PCS
E05-16	1711022621	初级主动齿轮	Primary Drive Gear		0	PCS
E05-17	GB/T819.1	螺钉M6x 30	Screw M6x 30		0	PCS
E05-18	1712022631	初级主动齿轮紧固螺母	Primary Drive Gear Locknut		0	PCS
E05-19	1712015131	机油泵O形圈 (9.4x2.4)	O-Ring 9.4x 2.4, Oil Pump		0	PCS
E05-20	GB/T5782	螺栓M5x 20	Bolt M5x 20		0	PCS
E05-21	GB/T819.1	螺钉M5x 12	Screw M5x 12		0	PCS
E05-22	GB/T820	螺钉M4x 12	Screw M4x 12		0	PCS
E05-23	1712015413	机油滤清器弹簧卡	Oil Filter Snap Ring		0	PCS

E-6 离合器 Clutch



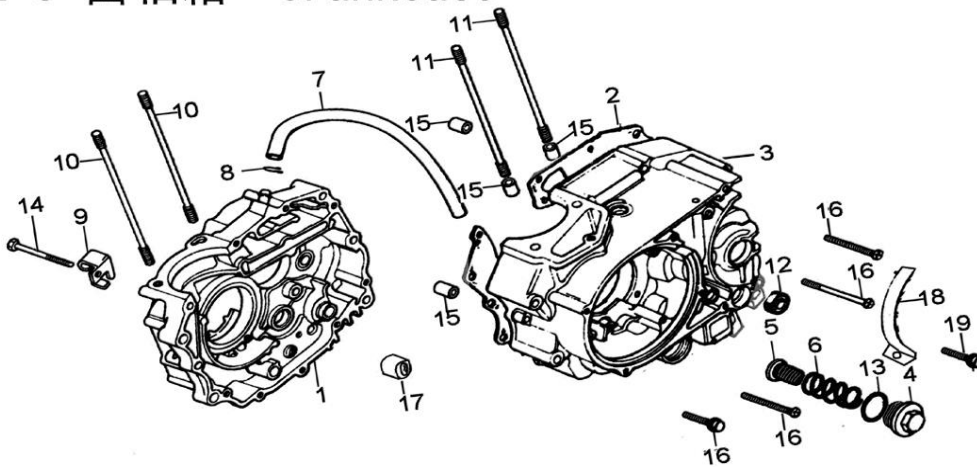
Id	PartNo	PartName	Description	ORDER QTY	Price	Unit
E06-01	1711022152	离合器紧固垫圈	Thrust Washer		0	PCS
E06-02	1711022110	离合器主动盘组合	Drive Disc Set		0	PCS
E06-03	1711022320	离合器从动盘组合	Driven Disc Set		0	PCS
E06-04	1711022330	离合器主动片组合	Drive Plate		0	PCS
E06-05	1711022341	离合器从动片	Driven Plate		0	PCS
E06-06	1711022351	离合器压板	Clutch Pressure Plate		0	PCS
E06-07	1711022361	离合器端盖	Clutch Lifter Plate		0	PCS
E06-08	1711022861	离合器推杆	Clutch Pusher		0	PCS
E06-09	1711022371	离合器弹簧	Clutch Spring		0	PCS
E06-10	GB/T16674	螺栓M6x 20	Bolt M6x 20		0	PCS
E06-11	1711022151	离合器紧固螺母	Lock Nut		0	PCS
E06-12	1711022372	离合器花键垫圈	Clutch Spline Washer		0	PCS
E06-13	GB/T276	轴承6003	Bearing 6003		0	PCS
E06-14	1711022310	离合器从动盘装配	Driven Disc Assy		0	PCS
E06-15	1711022100	离合器主体组合	Clutch Main Body		0	SETS

E-7 磁电机 Magneto



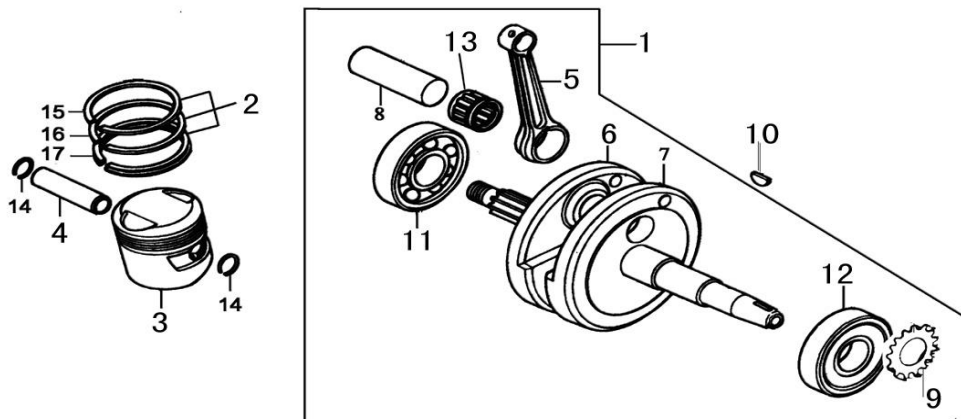
Id	PartNo	PartName	Description	ORDER QTY	Price	Unit
E07-01	1711011411	左曲轴箱盖	Crankcase Cover, LH		0	PCS
E07-02	1711011451	左后盖	Rear Cover, LH		0	PCS
E07-03	1711031280	触发线圈	Induction Coil		0	PCS
E07-04	1711028100	起动离合器总成	Starting Clutch Assy		0	PCS
E07-05	1711031110	磁电机转子组合	Magneto Rotor Comp.		0	PCS
E07-06	1711031210	磁电机定子组合	Magneto Stator Comp.		0	PCS
E07-07	1711031912	磁电机触发线圈线	Wire Clamp		0	PCS
E07-08	GB/T70.1	螺钉M8x 16	Screw M8x 16		0	PCS
E07-09	GB/T93	弹性垫圈(Φ8)	Spring Washer Φ8		0	PCS
E07-10	1712011412	观察孔螺塞	View Hole Plug		0	PCS
E07-11	1711011431	左小盖	Small Lid, LH		0	PCS
E07-12	1711031311	磁电机紧固螺钉	Magneto Locknut		0	PCS
E07-13	1711031312	磁电机紧固螺母垫	Thrust Washer		0	PCS
E07-14	1711031102	磁电机转子装配组	Magneto Rotor Assy		0	SETS
E07-15	1711011419	左曲轴箱盖密封垫	Crankcase Cover Gasket, LH		0	PCS
E07-16	1712011415	螺塞O型圈	Plug O-Ring		0	PCS
E07-17	1712011414	观察孔螺塞O型圈	Watch Hole Plug O-Ring		0	PCS
E07-18	1711011422	过轮盖O型圈	O-Ring		0	PCS
E07-19	GB/T818	螺钉M5x 12	Screw M5x 12		0	PCS
E07-20	GB/T818	螺钉M5x 30	Screw M5x 30		0	PCS
E07-21	GB/T5783	螺栓M6x 12	Bolt M6x 12		0	PCS
E07-22	GB/T16674	螺栓M6x 60	Bolt M6x 60		0	PCS
E07-23	GB/T16674	螺栓M6x 25	Bolt M6x 25		0	PCS
E07-24	1711011421	过轮盖	Idler Cover		0	PCS
E07-25	GB/T16674	螺栓M6x 20	Bolt M6x 20		0	PCS
E07-26	1711035760	档位显示触点组合	Gear Indicating Connector Comp.		0	PCS
E07-27	1711035730	档位线组合	Gear Indicating Wire Harness		0	PCS
E07-28	GB/T6172.1	螺母M10	Nut M10		0	PCS
E07-29	GB/T16674	螺栓M6x 55	Bolt M6x 55		0	PCS
E07-30	GB/T16674	螺栓M6x 40	Bolt M6x 40		0	PCS

E-8 曲轴箱 Crankcase



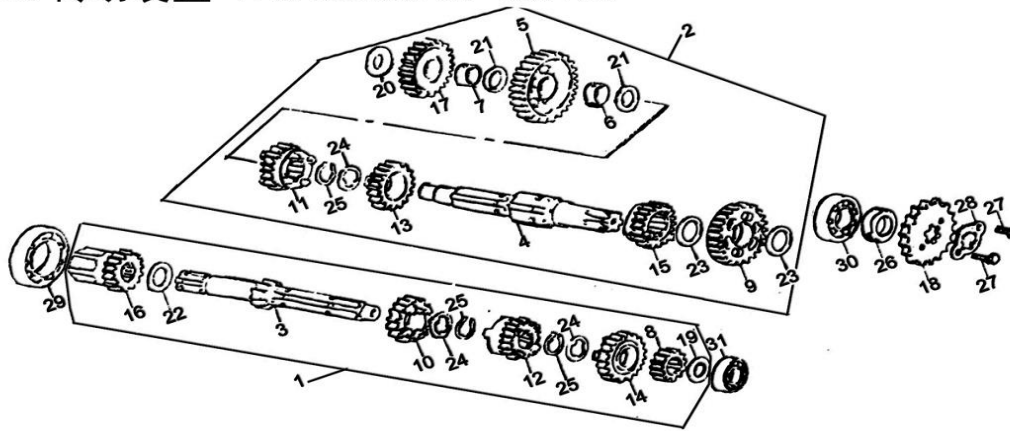
Id	PartNo	PartName	Description	ORDER QTY	Price	Unit
E08-01	1711011110	右曲轴箱组合	Crankcase Comp., RH		0	PCS
E08-02	1711011119	曲轴箱密封垫	Crankcase Gasket		0	PCS
E08-03	1711011210	左曲轴箱组合	Crankcase Comp., LH		0	PCS
E08-04	1712015463	机油滤网盖	Oil Filter Screen Cover		0	PCS
E08-05	1712015450	机油滤网组合	Oil Filter Screen		0	PCS
E08-06	1712015461	机油滤网弹簧	Oil Filter Screen Spring		0	PCS
E08-07	1712020152	曲轴箱废气管	Crankcase Exhaust Pipe		0	PCS
E08-08	1712020153	曲轴箱废气管夹	Crankcase Exhaust Pipe Clip		0	PCS
E08-09	1711022824	离合器拉索调节架	Clutch Cable Adjusting Stay		0	PCS
E08-10	1711012342	气缸螺栓A	Cylinder Stud A		0	PCS
E08-11	1711012343	气缸螺栓B	Cylinder Stud B		0	PCS
E08-12	1712024190	变档轴油封 (14x28x7)	Gearshift Shaft Oil Seal 14x28x7		0	PCS
E08-13	1712015462	机油滤网盖O型圈	Oil Filter Screen Cover O-Ring 35.5x3		0	PCS
E08-14	GB/T16674	螺栓M6x 60	Bolt M6x 60		0	PCS
E08-15	1712011118	曲轴箱定位销	Crankcase Dowel Pin 10x 14		0	PCS
E08-16	GB/T16674	螺栓M6x 50	Screw M6x 50		0	PCS
E08-17	GB/T290	滚针轴承HK152312	Bearing HK152312		0	PCS
E08-18	1711031928	磁电机线束挡板	Magneto Wire Harness Stopper		0	PCS
E08-19	GB/T5783	螺栓M6x 12	Bolt M6x 12		0	PCS

E-9 曲轴、活塞 Crankshaft & Piston



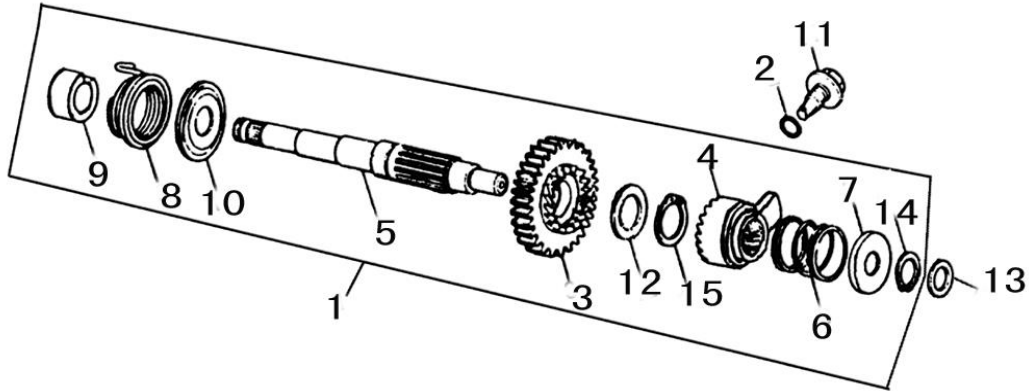
Id	PartNo	PartName	Description	ORDER QTY	Price	Unit
E09-01	1711013100	曲柄连杆组合	Crankshaft & Connecting Rod		0	SETS
E09-02	1711013300	活塞环组	Piston Ring Set		0	SETS
E09-03	1711013211	活塞	Piston		0	PCS
E09-04	1711013221	活塞销	Piston Pin		0	PCS
E09-05	1711013131	连杆	Connecting Rod		0	PCS
E09-06	1711013121	右曲柄	Crankshaft, RH		0	PCS
E09-07	1711013111	左曲柄	Crankshaft, LH		0	PCS
E09-08	1712013141	曲柄销	Crankshaft Pin		0	PCS
E09-09	1711014311	正时主动链轮	Timing Drive Gear		0	PCS
E09-10	1712013118	曲轴半圆键	Crankshaft Woodruff Key		0	PCS
E09-11	1711013170	曲轴右轴承	Crankshaft Bearing, RH		0	PCS
E09-12	1711013160	曲轴左轴承	Crankshaft Bearing, LH		0	PCS
E09-13	1712013150	连杆大头轴承	Connecting Rod Big End Bearing		0	PCS
E09-14	1712013222	活塞销挡圈	Piston Pin Circlip		0	PCS
E09-15	1711013311	活塞环(一)	Piston Ring I		0	PCS
E09-16	1711013312	活塞环(二)	Piston Ring II		0	PCS
E09-17	1711013320	油环组合	3-Piece Oil Ring		0	PCS

E-10 传动装置 Transmission Device



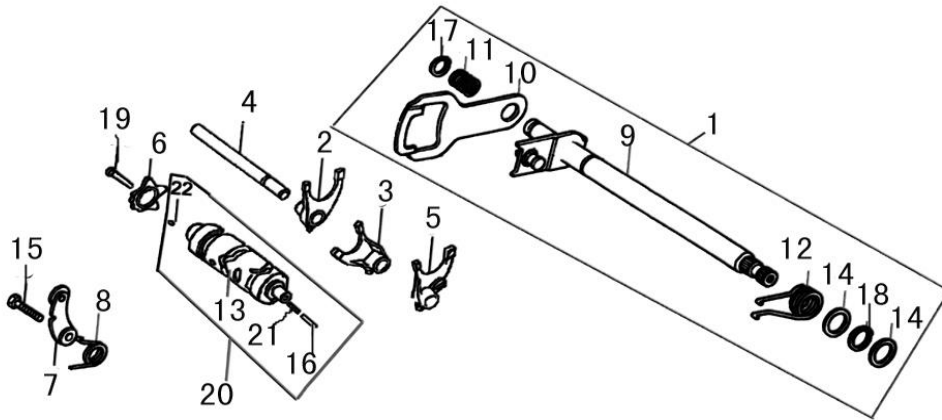
Id	PartNo	PartName	Description	ORDER QTY	Price	Unit
E10-01	1711023600	主轴组合	Mainshaft Assy		0	PCS
E10-02	1711023700	副轴组合	Countershaft Assy		0	PCS
E10-03	1711023611	主轴	Mainshaft		0	PCS
E10-04	1711023771	副轴	Countershaft		0	PCS
E10-05	1711023710	副轴一档齿轮组合	Countershaft First Gear		0	PCS
E10-06	1711023712	副轴一档齿轮衬套	Countershaft 1st Gear Bush		0	PCS
E10-07	1711027223	起动过桥齿轮衬套	Starting Mid-Gear Bush		0	PCS
E10-08	1711023621	主轴二档齿轮	Mainshaft Second Gear		0	PCS
E10-09	1711023721	副轴二档齿轮	Countershaft Second Gear		0	PCS
E10-10	1711023631	主轴三档齿轮	Mainshaft Third Gear		0	PCS
E10-11	1711023731	副轴三档齿轮	Countershaft Third Gear		0	PCS
E10-12	1711023641	主轴四档齿轮	Mainshaft Fourth Gear		0	PCS
E10-13	1711023741	副轴四档齿轮	Countershaft Fourth Gear		0	PCS
E10-14	1711023651	主轴五档齿轮	Mainshaft Fifth Gear		0	PCS
E10-15	1711023751	副轴五档齿轮	Countershaft Fifth Gear		0	PCS
E10-16	1711027230	起动从动齿轮组合	Starting Driven Gear Comp.		0	PCS
E10-17	1711027220	起动过桥齿轮组合	Starting Mid-Gear Comp.		0	PCS
E10-18	1712022711	输出链轮	Output Sprocket		0	PCS
E10-19	1711023674	主轴垫圈	Mainshaft Washer		0	PCS
E10-20	1711027224	起动过桥齿轮垫圈	Starting Mid-Gear Washer		0	PCS
E10-21	1711023773	副轴垫圈(一)	Countershaft Washer		0	PCS
E10-22	1711027233	起动从动齿轮垫圈	Washer		0	PCS
E10-23	1711023774	副轴垫圈(二)	Countershaft Washer II		0	PCS
E10-24	1711023675	主轴内花键垫圈	Mainshaft Spline Washer		0	PCS
E10-25	1711023672	主轴弹性挡圈	Circlip		0	PCS
E10-26	1711023790	副轴油封(20x 34)	Oil Seal 20x 34x 7		0	PCS
E10-27	GB/T5783	螺栓M6x 10	Bolt M6x 10		0	PCS
E10-28	1712022712	输出链轮固定板	Sprocket Locating Plate		0	PCS
E10-29	GB/T276	轴承6106	Bearing 6106		0	PCS
E10-30	GB/T276	轴承6204	Bearing 6204		0	PCS
E10-31	GB/T276	轴承6202	Bearing 6202		0	PCS

E-11 起动轴Starting Shaft



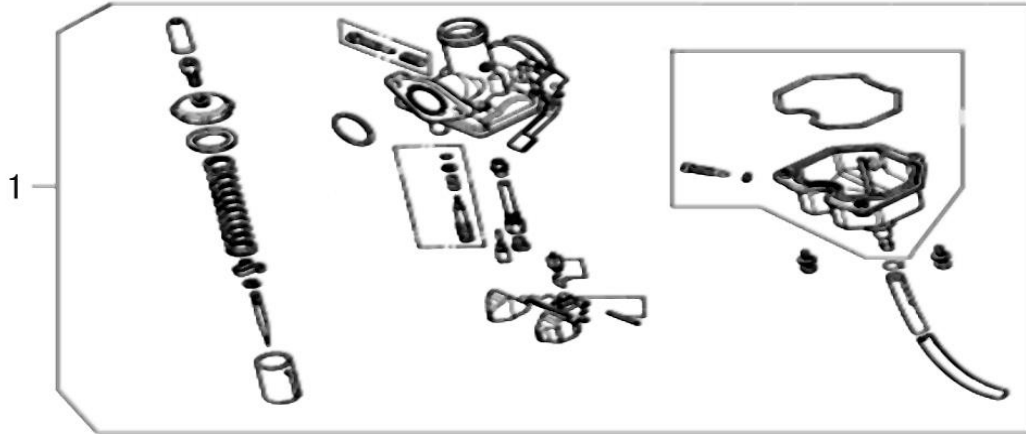
Id	PartNo	PartName	Description	ORDER QTY	Price	Unit
E11-01	1711027100	起动轴总成	Starting Shaft Assy		0	SETS
E11-02	1711027135	起动轴O型圈 (11.8x2.65)	Starting Shaft O-Ring 11.8x 2.65		0	PCS
E11-03	1711027150	起动齿轮组合	Starting Gear Comp.		0	PCS
E11-04	1711027113	棘轮	Ratchet		0	PCS
E11-05	1711027111	起动轴	Starting Shaft		0	PCS
E11-06	1711027115	起动轴弹簧	Starting Shaft Spring		0	PCS
E11-07	1711027120	棘轮弹簧座组合	Ratchet Spring Seat Comp.		0	PCS
E11-08	1711027118	起动回位弹簧	Starting Torsion Spring		0	PCS
E11-09	1711027119	起动轴轴环	Starting Shaft Sleeve		0	PCS
E11-10	1711027117	起动轴弹簧座	Starting Shaft Spring Seat		0	PCS
E11-11	1711027134	起动轴限位螺栓	Starting Shaft Screw		0	PCS
E11-12	1711027114	起动轴垫圈 (一)	Starting Shaft Washer I		0	PCS
E11-13	1711027141	起动轴垫圈 (二)	Starting Shaft Washer II		0	PCS
E11-14	GB/T8941.1	挡圈 (Φ16)	Circlip 16		0	PCS
E11-15	1711027142	起动轴弹性挡圈	Circlip		0	PCS

E-12 变档机构 Gearshift Device



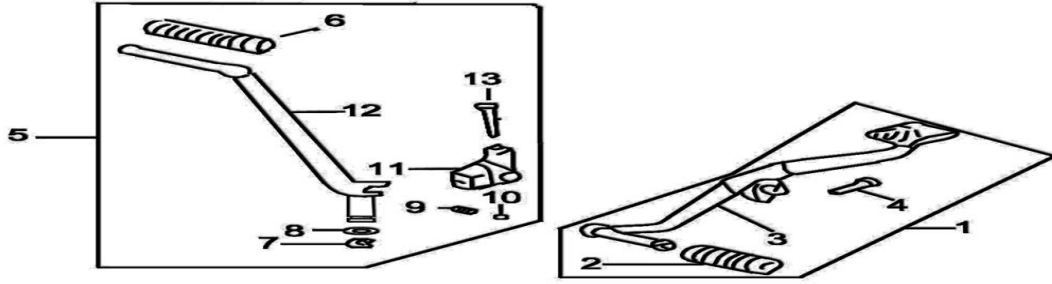
Id	PartNo	PartName	Description	ORDER QTY	Price	Unit
E12-01	1711024100	变档轴总成	Gearshift Shaft Assy		0	SETS
E12-02	1711024411	拨叉 (一)	Fork I		0	PCS
E12-03	1711024412	拨叉 (二)	Fork II		0	PCS
E12-04	1712024421	变档拨叉轴	Fork Shaft		0	PCS
E12-05	1711024413	拨叉 (三)	Fork III		0	PCS
E12-06	1711024221	变档轮	Gearshift Cam		0	PCS
E12-07	1711024310	档位定位板组合	Gear Setting Plate Comp.		0	PCS
E12-08	1711024323	定位板弹簧	Limit Block Torsion Spring		0	PCS
E12-09	1711024110	变档轴组合	Gearshift Shaft Set		0	PCS
E12-10	1711024121	变档拨板	Gearshift Shifter		0	PCS
E12-11	1711024122	变档拨板弹簧	Shifter Spring		0	PCS
E12-12	1711024123	变档轴回位弹簧	Gearshift Shaft Return Spring		0	PCS
E12-13	1711024211	变档凸轮	Gearshift Drum		0	PCS
E12-14	1712024124	变档轴垫圈	Gearshif Shaft Washer		0	PCS
E12-15	GB/T5783	螺栓M6x 20	Bolt M6x 20		0	PCS
E12-16	1711035761	挡位显示销	Gear Indicating Pin		0	PCS
E12-17	GB/T894.1	弹性挡圈 (Φ12)	Circlip 12		0	PCS
E12-18	GB/T894.1	弹性挡圈 (Φ14)	Circlip 14		0	PCS
E12-19	GB/T5783	螺栓 M6x 35	Bolt M6x 35		0	PCS
E12-20	1711024210	变档凸轮组合	Gearshift Drum Comp.		0	PCS
E12-21	1711035762	档位显示销弹簧	Spring		0	PCS
E12-22	1712024222	变档轮定位销	Gearshift Cam Pin		0	PCS

E-13 化油器 Carburetor



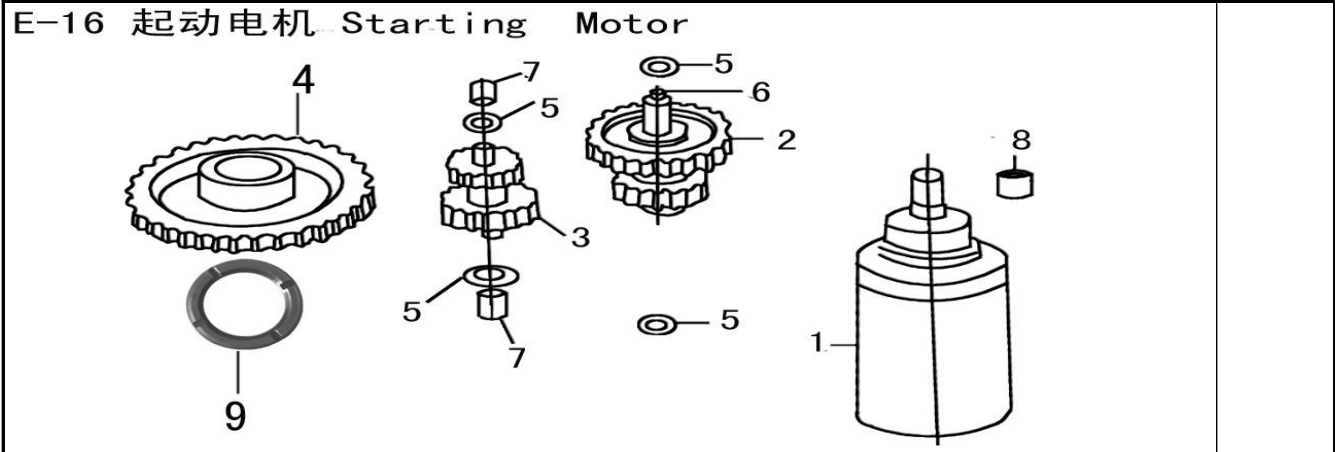
Id	PartNo	PartName	Description	ORDER QTY	Price	Unit
E13-01	1712016100	化油器总成	Carburetor Assy		0	PCS

E - 14 变档杆、起动杆 Gearshift Pedal & Starting Arm



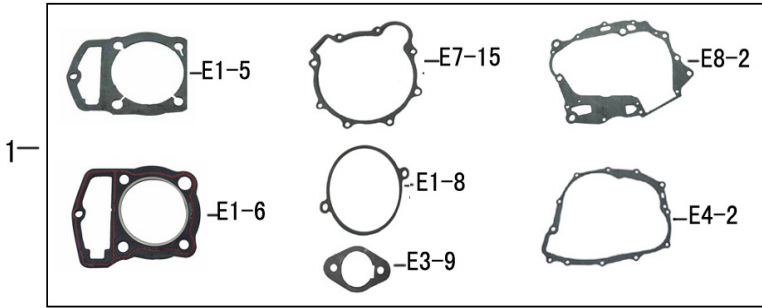
Id	PartNo	PartName	Description	ORDER QTY	Price	Unit
E14-01	1712024700	变档杆总成	Gearshift Pedal Assy		0	PCS
E14-02	1712024711	变档杆胶套	Gearshift Pedal Rubble Boot		0	PCS
E14-03	1712024720	变档杆焊接组合	Gearshift Pedal Weldment		0	PCS
E14-04	GB/T5783	螺栓M6x 20	Bolt M6x 20		0	PCS
E14-05	1711027700	起动杆总成	Starting Arm Assy		0	PCS
E14-06	1711027713	起动踏杆胶套	Starting Arm Assy Rubber Boot		0	PCS
E14-07	GB/T896	挡圈6	Circlip 6		0	PCS
E14-08	1711027715	起动杆销轴	Starting Arm Pin		0	PCS
E14-09	1711027714	起动杆弹簧	Starting Arm Assy Spring		0	PCS
E14-10	GB/T308	钢球8	Steel Ball 8		0	PCS
E14-11	1711027712	起动踏杆接头	Starting Arm Assy Joint		0	PCS
E14-12	1711027711	起动踏杆	Starting Arm		0	PCS
E14-13	GB/T5783	螺栓M8x 40	Bolt M8x 40		0	PCS

E-15 电器 Electric Element						
Id	PartNo	PartName	Description	ORDER QTY	Price	Unit
E15-01	1712031600	电压调节器	Voltage Regulator		0	PCS
E15-02	1712034400	点火控制器	Ignition Controller		0	PCS
E15-03	1712034500	点火线圈	Ignition Coil		0	PCS
E15-04	GB/T5783	螺栓M6x 20	Bolt M6x 20		0	PCS
E15-05	GB/T93	弹性垫圈6	Spring Washer (Φ6)		0	PCS
E15-06	GB/T97.1	垫圈6	Washer (Φ6)		0	PCS
E15-07	GB/T818	螺钉 M6x 25	Screw M6x 25		0	PCS
E15-08	1712034600	起动继电器	Starting Relay		0	PCS



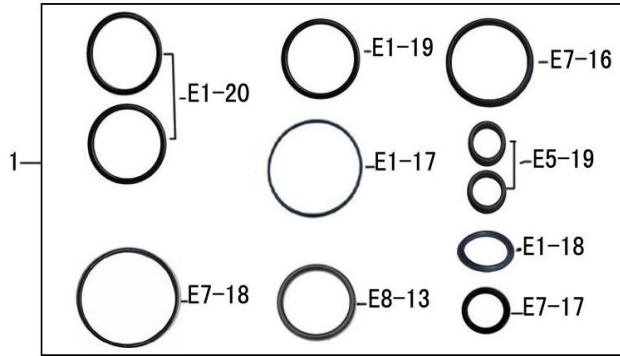
Id	PartNo	PartName	Description	ORDER QTY	Price	Unit
E16-01	1711034700	起动电机总成	Starting Motor Assy.		0	PCS
E16-02	1711028310	双联齿轮(一) 组合	Dual-Gear Comp. I		0	PCS
E16-03	1711028331	双联齿轮(二)	Dual-Gear Comp. II		0	PCS
E16-04	1711028150	起动离合器齿轮组	Starting Clutch Gear Comp.		0	PCS
E16-05	1711028312	双联齿轮垫圈	Dual-Gear Washer		0	PCS
E16-06	1711028320	双联齿轮轴组合	Dual-Gear Shaft Comp.		0	PCS
E16-07	GB/T290	滚针轴承HK101410	Needle Bearing Hk101410		0	PCS
E16-08	1711034781	起动电机安装套	Starting Motor Mounting Sleeve		0	PCS
E16-09	1711028172	起动离合器齿轮垫	Starting Clutch Gear Washer		0	PCS

E-17 全套纸垫 AFULL SET OF GASGETS



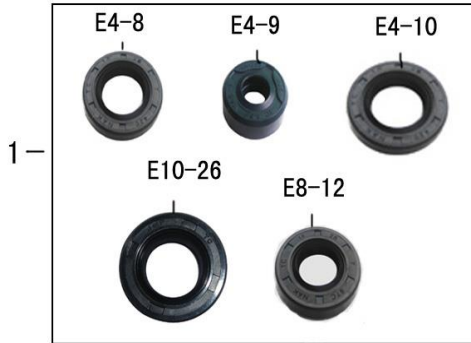
Id	PartNo	PartName	Description	ORDER QTY	Price	Unit
E17-01 (E1	17110QT001	全套纸垫	A Full Set Of Gaskets		0	SETS

E-18 全套密封圈 A FULL SET OF O-RINGS



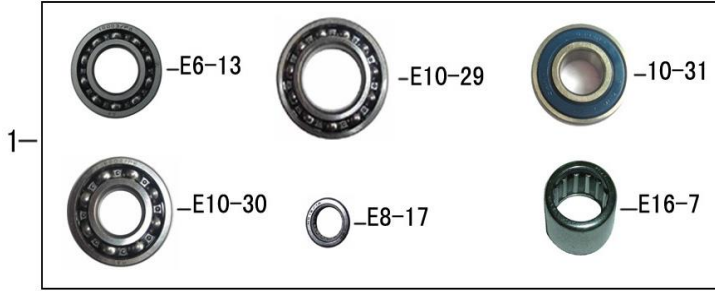
Id	PartNo	PartName	Description	ORDER QTY	Price	Unit
E18-01(E1	17110QT002	全套密封垫	A Full Sets Of O-Rings		0	SETS

E-19 全套油封 A FULL SET OF OIL SEALS



Id	PartNo	PartName	Description	ORDER QTY	Price	Unit
E19-01(E4	17110QT003	全套油封	A Full Set Of Oil Seals		0	SETS

E-20 全套轴承 A FULL SET OF BEARINGS



Id	PartNo	PartName	Description	ORDER QTY	Price	Unit
E20-01 (E617110QT004		全套轴承	A Full Set Of Bearings		0	SETS