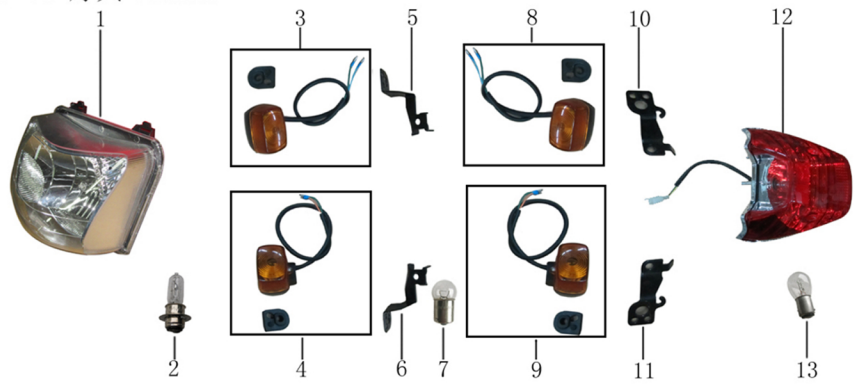




F-01 灯具 LIGHTS



Model: LF200GY-4 Update Time: 2015/4/22 10:42:12

PartNo.	PartCode	Description	U.Price	Unit	Purchase
F01-01	XXXXXXXXXX	Headlight Assy	0.00	PC	<a href="#">Purchase</a>
F01-02	XXXXXXXXXX	Bulb	0.00	PC	<a href="#">Purchase</a>
F01-03	XXXXXXXXXX	Winker, Front, Rh	0.00	PC	<a href="#">Purchase</a>
F01-04	XXXXXXXXXX	Winker, Front, Lh	0.00	PC	<a href="#">Purchase</a>
F01-05	XXXXXXXXXX	Bracket,Left Front Turn Signal	0.00	PC	<a href="#">Purchase</a>
F01-06	XXXXXXXXXX	Bracket,Right Front Turn Signal	0.00	PC	<a href="#">Purchase</a>
F01-07	XXXXXXXXXX	Bulb,Turn Signal	0.00	PC	<a href="#">Purchase</a>
F01-08	XXXXXXXXXX	Signal Assy.,Left Rear Turn	0.00	PC	<a href="#">Purchase</a>
F01-09	XXXXXXXXXX	Signal Assy.,Right Rear Turn	0.00	PC	<a href="#">Purchase</a>
F01-10	XXXXXXXXXX	Bracket,Left Rear Turn Signal	0.00	PC	<a href="#">Purchase</a>
F01-11	XXXXXXXXXX	Bracket,Right Rear Turn Signal	0.00	PC	<a href="#">Purchase</a>
F01-12	XXXXXXXXXX	Light Unit,Tail	0.00	PC	<a href="#">Purchase</a>
F01-13	XXXXXXXXXX	Bulb,Tail Light	0.00	PC	<a href="#">Purchase</a>

F-01-II 灯具 LIGHTS (250CC)



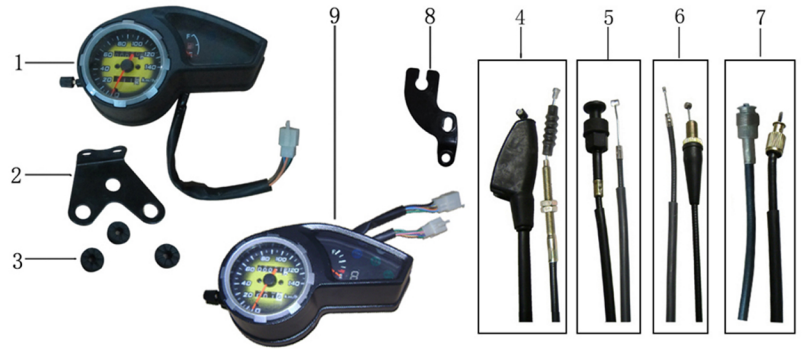
Model: LF200GY-4 Update Time: 2015/4/22 10:42:12

PartNo.	PartCode	Description	U.Price	Unit	Purchase
F01-II-01	XXXXXXXXXX	Air Guide Sleeve Comp.	0.00	PC	<a href="#">Purchase</a>
F01-II-02	XXXXXXXXXX	Headlight Assy	0.00	PC	<a href="#">Purchase</a>
F01-II-03	XXXXXXXXXX	Bulb	0.00	PC	<a href="#">Purchase</a>
F01-II-04	XXXXXXXXXX	Headlight Bracket, RH	0.00	PC	<a href="#">Purchase</a>
F01-II-05	XXXXXXXXXX	Headlight Bracket, LH	0.00	PC	<a href="#">Purchase</a>
F01-II-06	XXXXXXXXXX	Winker, Front, RH	0.00	PC	<a href="#">Purchase</a>
F01-II-07	XXXXXXXXXX	Winker, Front, LH	0.00	PC	<a href="#">Purchase</a>
F01-II-08	XXXXXXXXXX	Bracket,Left Rear Turn Signal	0.00	PC	<a href="#">Purchase</a>
F01-II-09	XXXXXXXXXX	Bracket,Right Rear Turn Signal	0.00	PC	<a href="#">Purchase</a>
F01-II-10	XXXXXXXXXX	Light Unit,Tail	0.00	PC	<a href="#">Purchase</a>
F01-II-11	XXXXXXXXXX	Bulb,Tail Light	0.00	PC	<a href="#">Purchase</a>



Model: LF200GY-4 Update Time: 2015/4/22 10:42:12

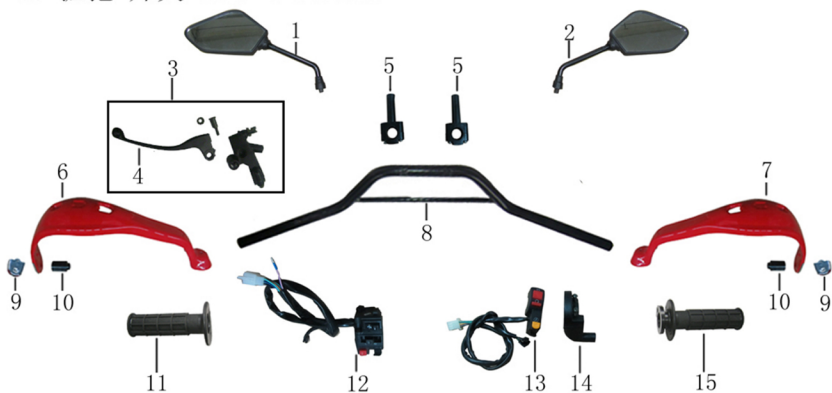
F-02 仪表 & 拉索 METER & CABLE



PartNo.	PartCode	Description	U.Price	Unit	Purchase
F02-01	XXXXXXXXXX	Meter Assy.	0.00	PC	<a href="#">Purchase</a>
F02-02	XXXXXXXXXX	Bracket,Meter	0.00	PC	<a href="#">Purchase</a>
F02-03	XXXXXXXXXX	I-Rubber	0.00	PC	<a href="#">Purchase</a>
F02-04	XXXXXXXXXX	Cable Comp,Clutch	0.00	PC	<a href="#">Purchase</a>
F02-05	XXXXXXXXXX	Cable Comp, Choke	0.00	PC	<a href="#">Purchase</a>
F02-06	XXXXXXXXXX	Cable Comp,Throttle	0.00	PC	<a href="#">Purchase</a>
F02-07	XXXXXXXXXX	Cable Comp,Speedometer	0.00	PC	<a href="#">Purchase</a>
F02-08	XXXXXXXXXX	Stay,Speedometer Cable	0.00	PC	<a href="#">Purchase</a>
F02-09	XXXXXXXXXX	Meter Assy.(250CC)	0.00	PC	<a href="#">Purchase</a>



F-03 握把 开关 GRIP & SWITCH



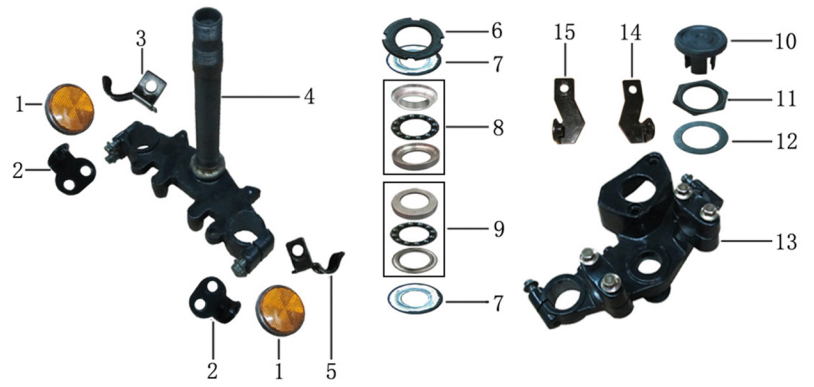
Model: LF200GY-4 Update Time: 2015/4/22 10:42:12

PartNo.	PartCode	Description	U.Price	Unit	Purchase
F03-01	XXXXXXXXXX	Rearview Mirror,LH	0.00	PC	<a href="#">Purchase</a>
F03-02	XXXXXXXXXX	Rearview Mirror,RH	0.00	PC	<a href="#">Purchase</a>
F03-03	XXXXXXXXXX	Lever Set, Clutch	0.00	PC	<a href="#">Purchase</a>
F03-04	XXXXXXXXXX	Lever, Clutch	0.00	PC	<a href="#">Purchase</a>
F03-05	XXXXXXXXXX	Deck Hand Guard	0.00	PC	<a href="#">Purchase</a>
F03-06	XXXXXXXXXX	Handle Guard,Left	0.00	PC	<a href="#">Purchase</a>
F03-07	XXXXXXXXXX	Handle Guard,Right	0.00	PC	<a href="#">Purchase</a>
F03-08	XXXXXXXXXX	Pipe Comp,Steering Handle	0.00	PC	<a href="#">Purchase</a>
F03-09	XXXXXXXXXX	Hand Block Guard Decorated	0.00	PC	<a href="#">Purchase</a>
F03-10	XXXXXXXXXX	Weight,Left Handle	0.00	PC	<a href="#">Purchase</a>
F03-11	XXXXXXXXXX	Grip, LH	0.00	PC	<a href="#">Purchase</a>
F03-12	XXXXXXXXXX	Handlebar Switch,LH	0.00	PC	<a href="#">Purchase</a>
F03-13	XXXXXXXXXX	Handlebar Switch,RH	0.00	PC	<a href="#">Purchase</a>
F03-14	XXXXXXXXXX	Seat,Greaser	0.00	PC	<a href="#">Purchase</a>
F03-15	XXXXXXXXXX	Grip Comp., Throttle	0.00	PC	<a href="#">Purchase</a>





### F-04 方向柱 STEERING STEM

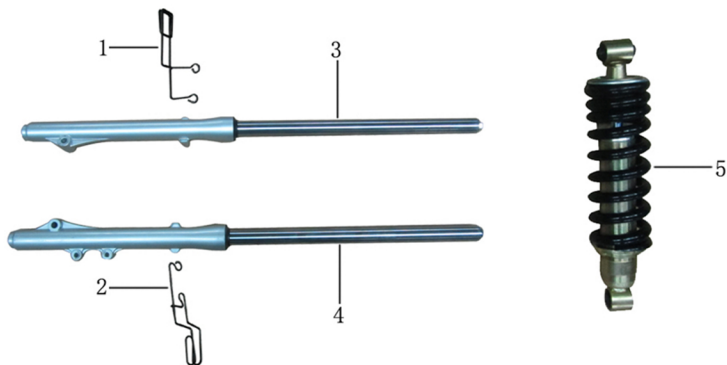


Model: LF200GY-4 Update Time: 2015/4/22 10:42:12

PartNo.	PartCode	Description	U.Price	Unit	Purchase
F04-01	XXXXXXXXX	Bracket,Side Reflector	0.00	PC	<a href="#">Purchase</a>
F04-02	XXXXXXXXX	Side Reflector	0.00	PC	<a href="#">Purchase</a>
F04-03	XXXXXXXXX	Wire Clip I	0.00	PC	<a href="#">Purchase</a>
F04-04	XXXXXXXXX	Body Set,Steering Stem	0.00	PC	<a href="#">Purchase</a>
F04-05	XXXXXXXXX	Circlip, Hose I	0.00	PC	<a href="#">Purchase</a>
F04-06	XXXXXXXXX	Adjust Nut,Steering Stem	0.00	PC	<a href="#">Purchase</a>
F04-07	XXXXXXXXX	Dust Cap,Steering Stem	0.00	PC	<a href="#">Purchase</a>
F04-08	XXXXXXXXX	Upper Bearing,Steering Stem	0.00	SET	<a href="#">Purchase</a>
F04-09	XXXXXXXXX	Lower Bearing,Steering Stem	0.00	SET	<a href="#">Purchase</a>
F04-10	XXXXXXXXX	Hole Plug	0.00	PC	<a href="#">Purchase</a>
F04-11	XXXXXXXXX	Acorn Nut,Steering Stem	0.00	PC	<a href="#">Purchase</a>
F04-12	XXXXXXXXX	Washer,Steering Stem	0.00	PC	<a href="#">Purchase</a>
F04-13	XXXXXXXXX	Plate, Connecting Upper	0.00	PC	<a href="#">Purchase</a>
F04-14	XXXXXXXXX	Headlight Bracket, LH	0.00	PC	<a href="#">Purchase</a>
F04-15	XXXXXXXXX	Headlight Bracket, RH	0.00	PC	<a href="#">Purchase</a>



F-05 減震器 SHOCK ABSORBER

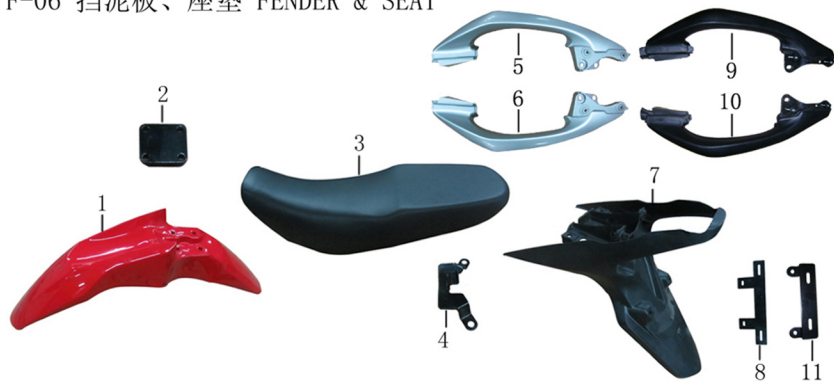


Model: LF200GY-4 Update Time: 2015/4/22 10:42:12

PartNo.	PartCode	Description	U.Price	Unit	Purchase
F05-01	XXXXXXXXX	Wire Clip Ii	0.00	PC	<a href="#">Purchase</a>
F05-02	XXXXXXXXX	Circlip, Hose Ii	0.00	PC	<a href="#">Purchase</a>
F05-03	XXXXXXXXX	Front Shock Absorber,RH	0.00	PC	<a href="#">Purchase</a>
F05-04	XXXXXXXXX	Front Shock Absorber,LH	0.00	PC	<a href="#">Purchase</a>
F05-05	XXXXXXXXX	Absorber Assy.,Rear Shock	0.00	PC	<a href="#">Purchase</a>



F-06 挡泥板、座垫 FENDER & SEAT



Model: LF200GY-4 Update Time: 2015/4/22 10:42:12

PartNo.	PartCode	Description	U.Price	Unit	Purchase
F06-01	XXXXXXXXXX	Front Fender	0.00	PC	<a href="#">Purchase</a>
F06-02	XXXXXXXXXX	Front Fender Lining	0.00	PC	<a href="#">Purchase</a>
F06-03	XXXXXXXXXX	Seat	0.00	PC	<a href="#">Purchase</a>
F06-04	XXXXXXXXXX	Seat Mounting Bracket	0.00	PC	<a href="#">Purchase</a>
F06-05	XXXXXXXXXX	Rear Handrail,RH	0.00	PC	<a href="#">Purchase</a>
F06-06	XXXXXXXXXX	Rear Handrail,LH	0.00	PC	<a href="#">Purchase</a>
F06-07	XXXXXXXXXX	Rear Fender	0.00	PC	<a href="#">Purchase</a>
F06-08	XXXXXXXXXX	Bracket,Rear Registration Plate	0.00	PC	<a href="#">Purchase</a>
F06-09	XXXXXXXXXX	Rear Handrail,RH(250CC)	0.00	PC	<a href="#">Purchase</a>
F06-10	XXXXXXXXXX	Rear Handrail,LH(250CC)	0.00	PC	<a href="#">Purchase</a>
F06-11	XXXXXXXXXX	Bracket,Rear Registration Plate(250CC)	0.00	PC	<a href="#">Purchase</a>



Model: LF200GY-4 Update Time: 2015/4/22 10:42:12

F-07 覆盖件 COVER



PartNo.	PartCode	Description	U.Price	Unit	Purchase
F07-01	XXXXXXXXX	Air Guide Sleeve Comp.	0.00	PC	<a href="#">Purchase</a>
F07-02	XXXXXXXXX	Connecting Block Of Headlight Bracket	0.00	PC	<a href="#">Purchase</a>
F07-03	XXXXXXXXX	Cover,Fuel Tank Right Decorative	0.00	PC	<a href="#">Purchase</a>
F07-04	XXXXXXXXX	Cover,Fuel Tank Left Decorative	0.00	PC	<a href="#">Purchase</a>
F07-05	XXXXXXXXX	Cover,Right Side	0.00	PC	<a href="#">Purchase</a>
F07-06	XXXXXXXXX	Cover,Left Side	0.00	PC	<a href="#">Purchase</a>
F07-07	XXXXXXXXX	Body Cover,Right	0.00	PC	<a href="#">Purchase</a>
F07-08	XXXXXXXXX	Body Cover,Left	0.00	PC	<a href="#">Purchase</a>
F07-09	XXXXXXXXX	Cover Comp.,Tail (White W4)	0.00	PC	<a href="#">Purchase</a>

F-08 油箱 FUEL TANK



Model: LF200GY-4 Update Time: 2015/4/22 10:42:12



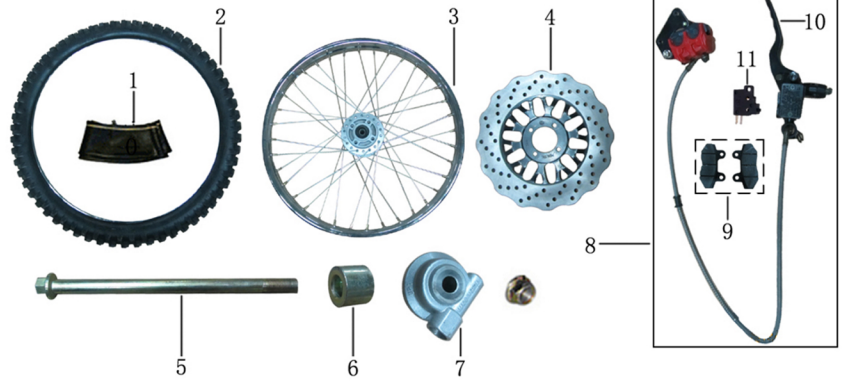
PartNo.	PartCode	Description	U.Price	Unit	Purchase
F08-01	XXXXXXXXX	Lock Kit	0.00	SET	<a href="#">Purchase</a>
F08-02	XXXXXXXXX	Rubber Jacket,Fuel Tank Prop	0.00	PC	<a href="#">Purchase</a>
F08-03	XXXXXXXXX	Fuel Tank Comp.	0.00	PC	<a href="#">Purchase</a>
F08-04	XXXXXXXXX	Sensor, Fuel Level	0.00	PC	<a href="#">Purchase</a>
F08-05	XXXXXXXXX	Fuel Switch Assy.	0.00	PC	<a href="#">Purchase</a>
F08-06	XXXXXXXXX	Pad,Fuel Tank Cushion	0.00	PC	<a href="#">Purchase</a>
F08-07	XXXXXXXXX	Washer,Flange	0.00	PC	<a href="#">Purchase</a>





Model: LF200GY-4 Update Time: 2015/4/22 10:42:12

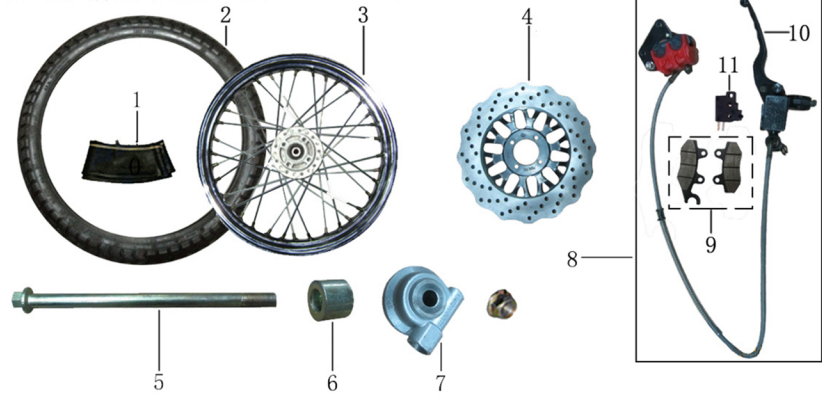
F-09 前轮 FRONT WHEEL



PartNo.	PartCode	Description	U.Price	Unit	Purchase
F09-01	XXXXXXXXXX	Tube,Front Wheel	0.00	PC	<a href="#">Purchase</a>
F09-02	XXXXXXXXXX	Tire,Front Wheel	0.00	PC	<a href="#">Purchase</a>
F09-03	XXXXXXXXXX	Wheel,Front	0.00	PC	<a href="#">Purchase</a>
F09-04	XXXXXXXXXX	Disk Comp.,Front Brake	0.00	PC	<a href="#">Purchase</a>
F09-05	XXXXXXXXXX	Axle,Front Wheel	0.00	PC	<a href="#">Purchase</a>
F09-06	XXXXXXXXXX	Washer,Flange	0.00	PC	<a href="#">Purchase</a>
F09-07	XXXXXXXXXX	Speed Counter	0.00	PC	<a href="#">Purchase</a>
F09-08	XXXXXXXXXX	Disc-Brake Assy.,Front	0.00	PC	<a href="#">Purchase</a>
F09-09	XXXXXXXXXX	Pad Comp.,Front Brake	0.00	PC	<a href="#">Purchase</a>
F09-10	XXXXXXXXXX	Lever Comp.,Right Steering Handle	0.00	PC	<a href="#">Purchase</a>
F09-11	XXXXXXXXXX	Switch, Brake	0.00	PC	<a href="#">Purchase</a>



F-09-II 前轮 FRONT WHEEL (250CC)



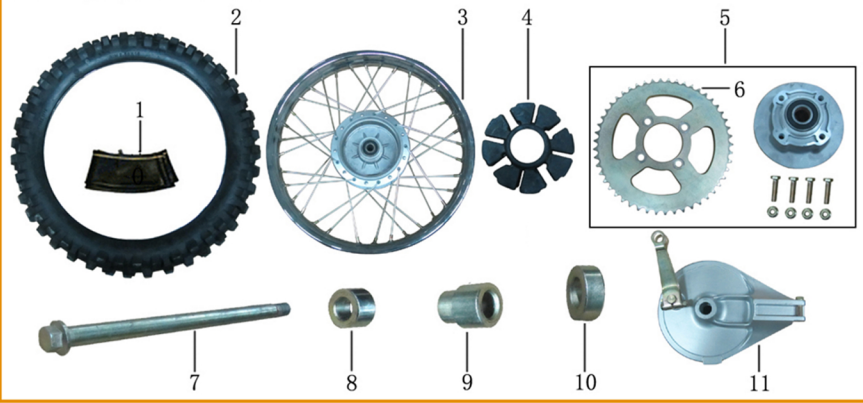
Model: LF200GY-4 Update Time: 2015/4/22 10:42:12

PartNo.	PartCode	Description	U.Price	Unit	Purchase
F09-II-01	XXXXXXXXXX	Tube,Front Wheel	0.00	PC	<a href="#">Purchase</a>
F09-II-02	XXXXXXXXXX	Tire,Front Wheel	0.00	PC	<a href="#">Purchase</a>
F09-II-03	XXXXXXXXXX	Wheel,Front	0.00	PC	<a href="#">Purchase</a>
F09-II-04	XXXXXXXXXX	Disk Comp.,Front Brake	0.00	PC	<a href="#">Purchase</a>
F09-II-05	XXXXXXXXXX	Axle,Front Wheel	0.00	PC	<a href="#">Purchase</a>
F09-II-06	XXXXXXXXXX	Washer,Flange	0.00	PC	<a href="#">Purchase</a>
F09-II-07	XXXXXXXXXX	Speed Counter	0.00	PC	<a href="#">Purchase</a>
F09-II-08	XXXXXXXXXX	Disc-Brake Assy.,Front	0.00	PC	<a href="#">Purchase</a>
F09-II-09	XXXXXXXXXX	Pad Comp.,Front Brake	0.00	SET	<a href="#">Purchase</a>
F09-II-10	XXXXXXXXXX	Lever Comp.,Right Steering Handle	0.00	PC	<a href="#">Purchase</a>
F09-II-11	XXXXXXXXXX	Switch, Brake	0.00	PC	<a href="#">Purchase</a>



Model: LF200GY-4 Update Time: 2015/4/22 10:42:12

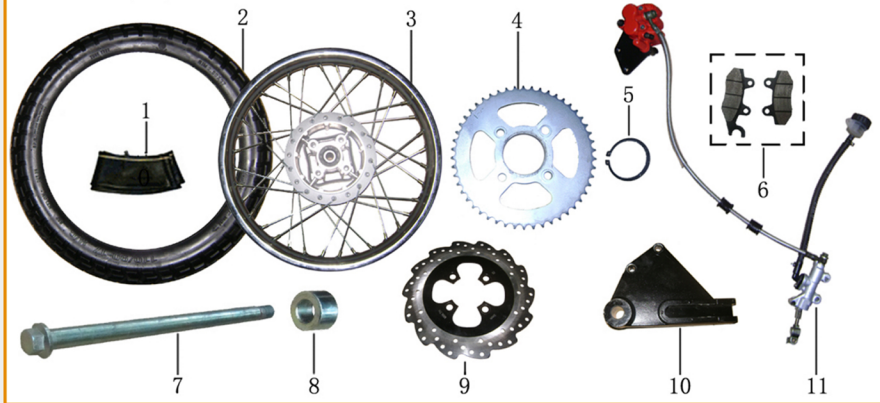
F-10 后轮 REAR WHEEL



PartNo.	PartCode	Description	U.Price	Unit	Purchase
F10-01	XXXXXXXXXX	Tube,Rear Wheel	0.00	PC	<a href="#">Purchase</a>
F10-02	XXXXXXXXXX	Tire,Rear Wheel	0.00	PC	<a href="#">Purchase</a>
F10-03	XXXXXXXXXX	Wheel,Rear	0.00	PC	<a href="#">Purchase</a>
F10-04	XXXXXXXXXX	Rear Wheel Buffer	0.00	PC	<a href="#">Purchase</a>
F10-05	XXXXXXXXXX	Sprocket Comp.,Final Driven	0.00	PC	<a href="#">Purchase</a>
F10-06	XXXXXXXXXX	Sprocket,Final Driven	0.00	PC	<a href="#">Purchase</a>
F10-07	XXXXXXXXXX	Axle,Rear Wheel	0.00	PC	<a href="#">Purchase</a>
F10-08	XXXXXXXXXX	Rear Wheel Bush, LH	0.00	PC	<a href="#">Purchase</a>
F10-09	XXXXXXXXXX	Sprocket Hub Inner Bush	0.00	PC	<a href="#">Purchase</a>
F10-10	XXXXXXXXXX	Rear Wheel Bush,RH	0.00	PC	<a href="#">Purchase</a>
F10-11	XXXXXXXXXX	Rear Brake	0.00	PC	<a href="#">Purchase</a>



F-10-II 后轮 REAR WHEEL (250CC)



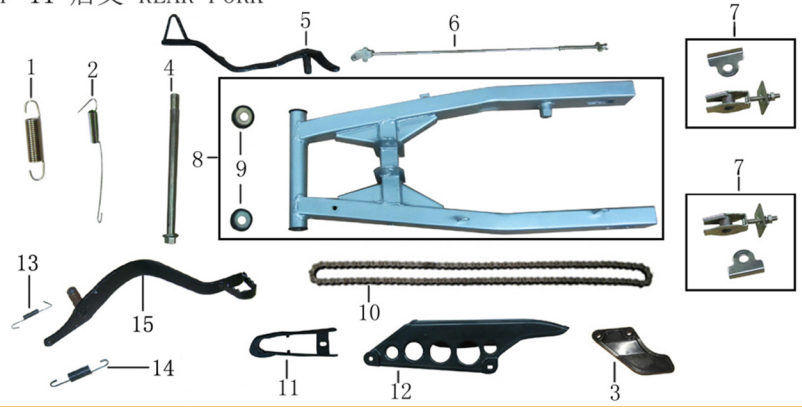
Model: LF200GY-4 Update Time: 2015/4/22 10:42:12

PartNo.	PartCode	Description	U.Price	Unit	Purchase
F10-II-01	XXXXXXXXXX	Tube,Rear Wheel	0.00	PC	<a href="#">Purchase</a>
F10-II-02	XXXXXXXXXX	Tire,Rear Wheel	0.00	PC	<a href="#">Purchase</a>
F10-II-03	XXXXXXXXXX	Wheel,Rear	0.00	PC	<a href="#">Purchase</a>
F10-II-04	XXXXXXXXXX	Sprocket Comp.,Final Driven	0.00	PC	<a href="#">Purchase</a>
F10-II-05	XXXXXXXXXX	Collar	0.00	PC	<a href="#">Purchase</a>
F10-II-06	XXXXXXXXXX	Pad Comp.,Rear Brake	0.00	SET	<a href="#">Purchase</a>
F10-II-07	XXXXXXXXXX	Axle,Rear Wheel	0.00	PC	<a href="#">Purchase</a>
F10-II-08	XXXXXXXXXX	Rear Wheel Bush, LH	0.00	PC	<a href="#">Purchase</a>
F10-II-09	XXXXXXXXXX	Disk Comp.,Rear Brake	0.00	PC	<a href="#">Purchase</a>
F10-II-10	XXXXXXXXXX	Rear Brake Caliper Plate	0.00	PC	<a href="#">Purchase</a>
F10-II-11	XXXXXXXXXX	Rear Hydraulic Disc Brake Assy	0.00	PC	<a href="#">Purchase</a>





F-11 后叉 REAR FORK



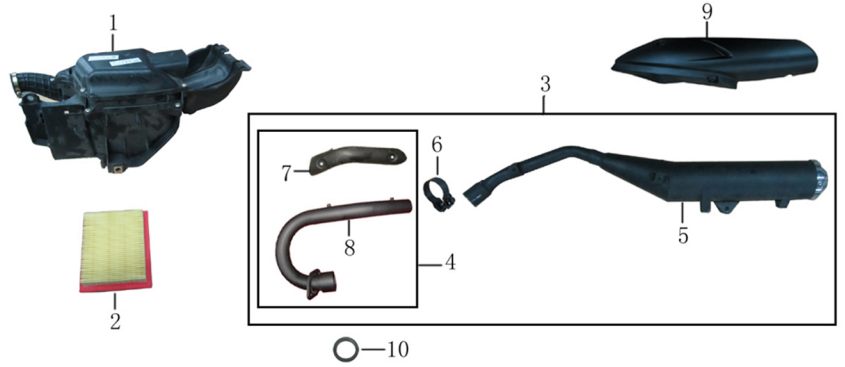
Model: LF200GY-4 Update Time: 2015/4/22 10:42:12

PartNo.	PartCode	Description	U.Price	Unit	Purchase
F11-01	XXXXXXXXXX	Return Spring,Rear Brake Pedal	0.00	PC	<a href="#">Purchase</a>
F11-02	XXXXXXXXXX	Extension Spring,Rear Brake Switch	0.00	PC	<a href="#">Purchase</a>
F11-03	XXXXXXXXXX	Chain Link Guard Shield	0.00	PC	<a href="#">Purchase</a>
F11-04	XXXXXXXXXX	Bolt, Rear Fork Pivot	0.00	PC	<a href="#">Purchase</a>
F11-05	XXXXXXXXXX	Pedal Comp.,Rear Brake	0.00	PC	<a href="#">Purchase</a>
F11-06	XXXXXXXXXX	Rod Comp.,Rear Brake	0.00	PC	<a href="#">Purchase</a>
F11-07	XXXXXXXXXX	Adjuster,Drive Chain	0.00	PC	<a href="#">Purchase</a>
F11-08	XXXXXXXXXX	Welding Comp.,Rear Fork	0.00	PC	<a href="#">Purchase</a>
F11-09	XXXXXXXXXX	Cap,Rear Fork Dust Seal	0.00	PC	<a href="#">Purchase</a>
F11-10	XXXXXXXXXX	Chain,Drive	0.00	PC	<a href="#">Purchase</a>
F11-11	XXXXXXXXXX	Slider,Drive Chain	0.00	PC	<a href="#">Purchase</a>
F11-12	XXXXXXXXXX	Case,Drive Chain	0.00	PC	<a href="#">Purchase</a>
F11-13	XXXXXXXXXX	Extension Spring,Rear Brake Switch (250CC)	0.00	PC	<a href="#">Purchase</a>
F11-14	XXXXXXXXXX	Return Spring,Rear Brake Pedal (250CC)	0.00	PC	<a href="#">Purchase</a>
F11-15	XXXXXXXXXX	Pedal Comp.,Rear Brake (250CC)	0.00	PC	<a href="#">Purchase</a>





F-12 排气消声器、空气滤清器 MUFFLER & AIR CLEANER



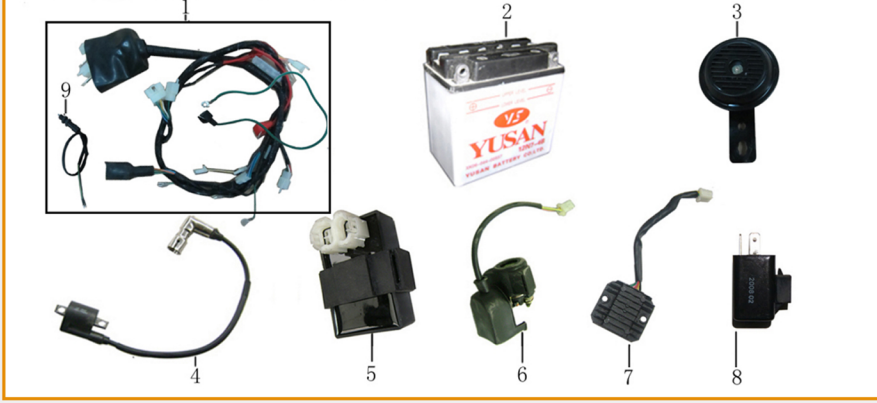
Model: LF200GY-4 Update Time: 2015/4/22 10:42:12

PartNo.	PartCode	Description	U.Price	Unit	Purchase
F12-01	XXXXXXXXXX	Air Cleaner Comp.	0.00	PC	<a href="#">Purchase</a>
F12-02	XXXXXXXXXX	Element,Air Cleaner	0.00	PC	<a href="#">Purchase</a>
F12-03	XXXXXXXXXX	Muffler Assy.,Exhaust	0.00	PC	<a href="#">Purchase</a>
F12-04	XXXXXXXXXX	Front Muffler	0.00	PC	<a href="#">Purchase</a>
F12-05	XXXXXXXXXX	Rear Section Muffler	0.00	PC	<a href="#">Purchase</a>
F12-06	XXXXXXXXXX	Clamp	0.00	PC	<a href="#">Purchase</a>
F12-07	XXXXXXXXXX	Muffler Before The Decorative Cover	0.00	PC	<a href="#">Purchase</a>
F12-08	XXXXXXXXXX	Exhaust Pipe	0.00	PC	<a href="#">Purchase</a>
F12-09	XXXXXXXXXX	Muffler Shroud	0.00	PC	<a href="#">Purchase</a>
F12-10	XXXXXXXXXX	Gasket,Exhaust Opening	0.00	PC	<a href="#">Purchase</a>



Model: LF200GY-4 Update Time: 2015/4/22 10:42:12

F-13 电器 ELECTRICAL ELEMENTS

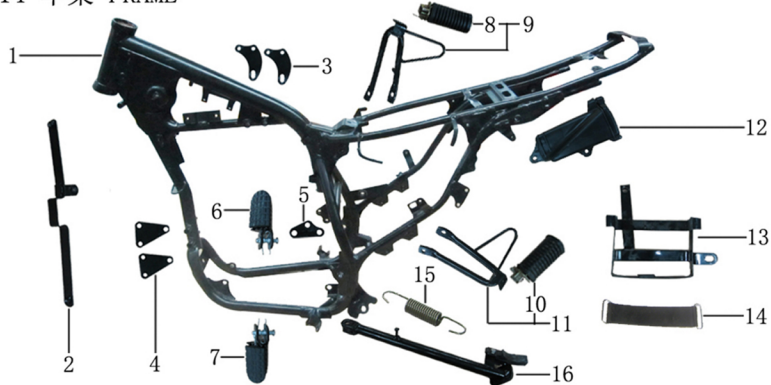


PartNo.	PartCode	Description	U.Price	Unit	Purchase
F13-01	XXXXXXXXX	Harness,Wire	0.00	PC	<a href="#">Purchase</a>
F13-02	XXXXXXXXX	Battery Assy.	0.00	PC	<a href="#">Purchase</a>
F13-03	XXXXXXXXX	Horn Assy.	0.00	PC	<a href="#">Purchase</a>
F13-04	XXXXXXXXX	Coil Assy.,Ignition	0.00	PC	<a href="#">Purchase</a>
F13-05	XXXXXXXXX	Unit Assy,C.D.I.	0.00	PC	<a href="#">Purchase</a>
F13-06	XXXXXXXXX	Relay Assy.,Starting	0.00	PC	<a href="#">Purchase</a>
F13-07	XXXXXXXXX	Rectifier Regulate Assy.	0.00	PC	<a href="#">Purchase</a>
F13-08	XXXXXXXXX	Flasher	0.00	PC	<a href="#">Purchase</a>
F13-09	XXXXXXXXX	Switch Assy.,Rear Brake	0.00	PC	<a href="#">Purchase</a>



Model: LF200GY-4 Update Time: 2015/4/22 10:42:12

F-14 车架 FRAME



PartNo.	PartCode	Description	U.Price	Unit	Purchase
F14-01	XXXXXXXXXX	Body Comp.,Frame	0.00	PC	<a href="#">Purchase</a>
F14-02	XXXXXXXXXX	Bracket Of Fuel Tank's Decorative Cover	0.00	PC	<a href="#">Purchase</a>
F14-03	XXXXXXXXXX	Plate,Upper Engine Hanger	0.00	PC	<a href="#">Purchase</a>
F14-04	XXXXXXXXXX	Plate,Front Engine Hanger	0.00	PC	<a href="#">Purchase</a>
F14-05	XXXXXXXXXX	Plate,Rear Engine Hanger	0.00	PC	<a href="#">Purchase</a>
F14-06	XXXXXXXXXX	Step Assy.Right	0.00	PC	<a href="#">Purchase</a>
F14-07	XXXXXXXXXX	Step Assy.Left	0.00	PC	<a href="#">Purchase</a>
F14-08	XXXXXXXXXX	Step,Right Pillion	0.00	PC	<a href="#">Purchase</a>
F14-09	XXXXXXXXXX	Step Assy.,Right Pillion	0.00	PC	<a href="#">Purchase</a>
F14-10	XXXXXXXXXX	Step,Left Pillion	0.00	PC	<a href="#">Purchase</a>
F14-11	XXXXXXXXXX	Step Assy.,Left Pillion	0.00	PC	<a href="#">Purchase</a>
F14-12	XXXXXXXXXX	Tool Box	0.00	PC	<a href="#">Purchase</a>
F14-13	XXXXXXXXXX	Bracket,Battery	0.00	PC	<a href="#">Purchase</a>
F14-14	XXXXXXXXXX	Band,Battery	0.00	PC	<a href="#">Purchase</a>

# 目 录

## INDEX TO ENGINE GROUP

E-1	气缸、气缸头.....	1
	<b>CYLINDER BLOCK &amp; CYLINDER HEAD</b>	
E-2	配气机构.....	3
	<b>VALVE TRAIN</b>	
E-3	右曲轴箱盖.....	6
	<b>RIGHT CRANKCASE</b>	
E-4	曲轴箱.....	8
	<b>CRANKCASE</b>	
E-5	机油泵、机油滤清器.....	10
	<b>OIL PUMP &amp; OIL FILTER</b>	
E-6	起动电机.....	12
	<b>STARTING MOTOR</b>	
E-7	磁电机.....	13
	<b>MAGNETO</b>	
E-8	离合器.....	16
	<b>CLUTCH</b>	
E-9	曲轴、活塞.....	18
	<b>CRANKSHAFT &amp; PISTON</b>	
E-10	传动装置.....	20

**TRANSMISSION**

E-11 变档机构..... 24

**GEARSHIFT DEVICE**

E-12 化油器..... 26

**CARBURETOR**

E-13 变档杆、起动杆 ..... 27

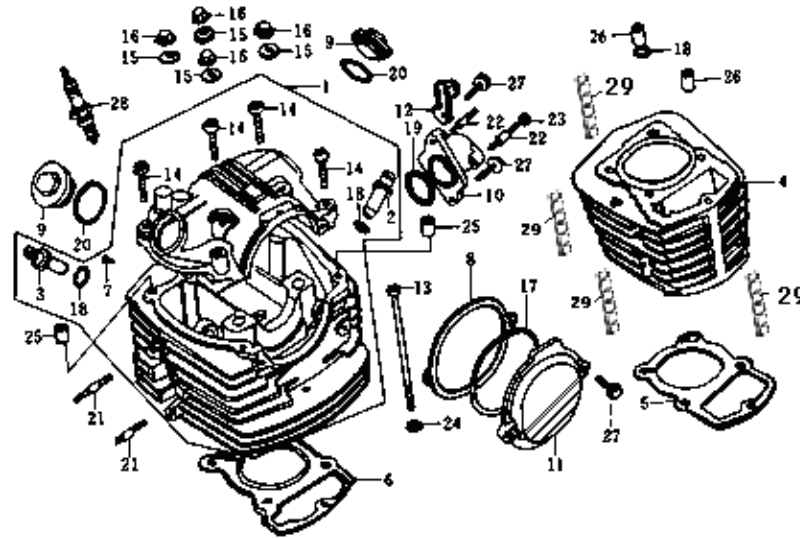
**GEARSHIFT PEDAL & STARTING ARM**

E - 14 电器..... 28

**ELECTRIC ELEMENTS**

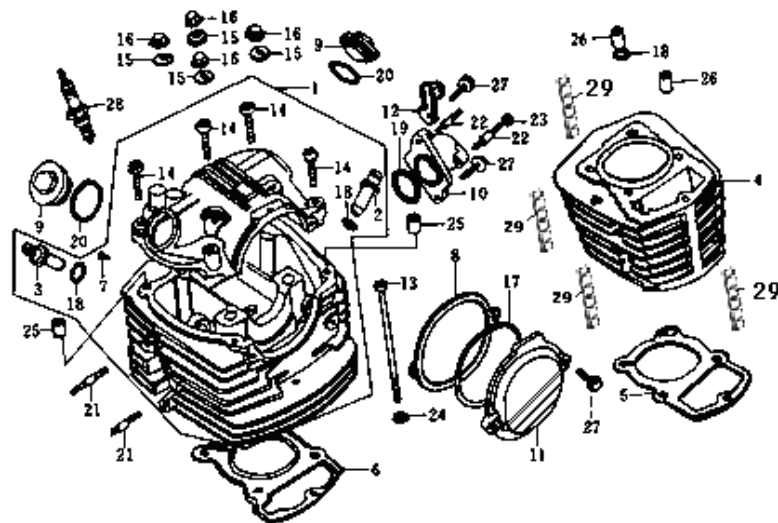


## E-1 气缸体、气缸头 CYLINDER BLOCK & CYLINDER HEAD



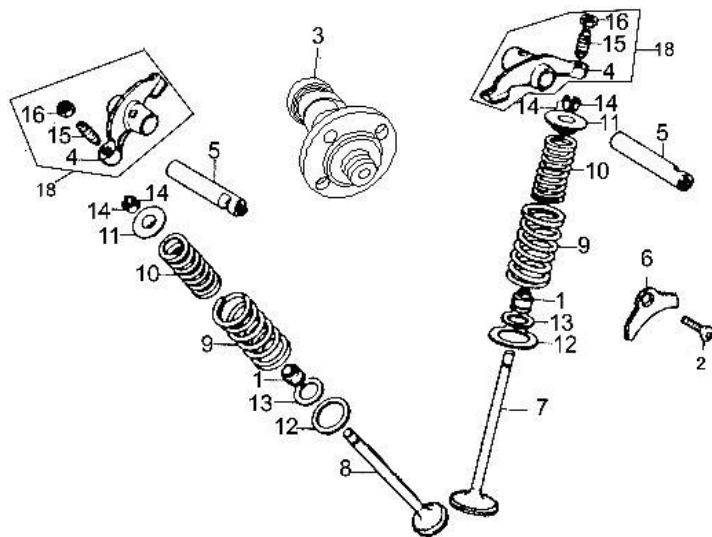
序号 S/N	零部件代号 Part No.	零部件名称	Description	数量 Quantity	备注 Remark
1	BLM12210	气缸头组合	Head comp., cylinder	1	
2	BIQ12214	进气门导管	Guide, intake valve	1	
3	BIQ12215	排气门导管	Guide, exhaust valve	1	
4	BMM12110	气缸体组合	Block comp., cylinder	1	
5	BMM12121	气缸体密封垫	Gasket, cylinder block	1	
6	BLM12220	气缸头密封垫组合	Gasket, cylinder head	1	
7	BIA12217	橡胶堵头	Plug, cylinder head	1	
8	BIA12245	缸头左盖密封垫	Gasket, cylinder cover, LH	1	
9	BIA15463	机油滤网盖	Cover, gauze	2	
10	GLA17310	进气管组件	Pipe, inlet	1	
11	BLA12242	气缸头左盖	Cover, cylinder head, LH	1	
12	GIA34931	点火线圈线夹	Wire clamp, ignition coil	1	
13	Q21806125F30	螺钉 (M6×125)	Screw, M6×125	1	
14	Q1860635F15	螺栓 M6×35	Bolt, M6×35	4	
15	Q93531A1	垫圈	Washer	4	
16	BIA12313	盖形螺母 M8	Nut, M8	4	

## E-1 气缸体、气缸头 CYLINDER BLOCK & CYLINDER HEAD



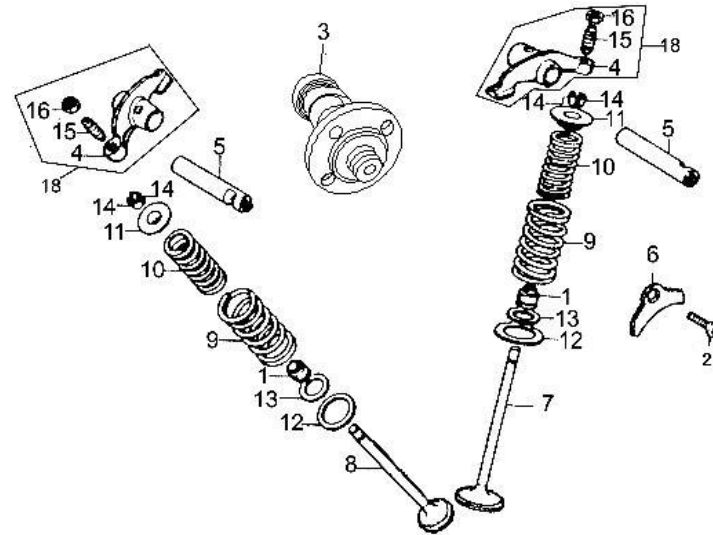
序号 S/N	零部件代号 Part No.	零部件名称	Description	数量 Quantity	备注 Remark
17	BIA12247	气缸头左盖 O 型圈 (75×2.5)	O-ring, LH, 75×2.5	1	
18	GIA12216	导管 O 型圈 (10×1.6)	O-ring, 10×1.6	3	
19	BIA17321	进气管 O 型圈 II (33.5×3)	O-ring II, 33.5×3	1	
20	BIA12246	气门盖 O 型圈 (35×3)	O-ring, 35×3	2	
21	Q1270635	螺柱 M6×35	Stud, M6×35	2	
22	Q1270625	螺柱 M6×25	Stud, M6×25	2	
23	Q38006	螺母 M6	Nut, M6	2	
24	GIA12315	气缸头盖油道垫圈 6	Washer, 6	1	
25	BIA12318	气缸头盖定位销 (8×14)	Dowel pin, 8×14	2	
26	BIA12218	气缸头定位销 (10×20)	Dowel pin, 10×20	3	
27	Q1840620	螺栓 M6×20	Bolt, M6×20	2	
28	GIA34210	火花塞 (D8EA)	Plug, spark (D8EA)	1	
29	BJR12115	气缸减震块	Block, cylinder shock absorber	4	

## E-2 配气机构 VALVE TRAIN



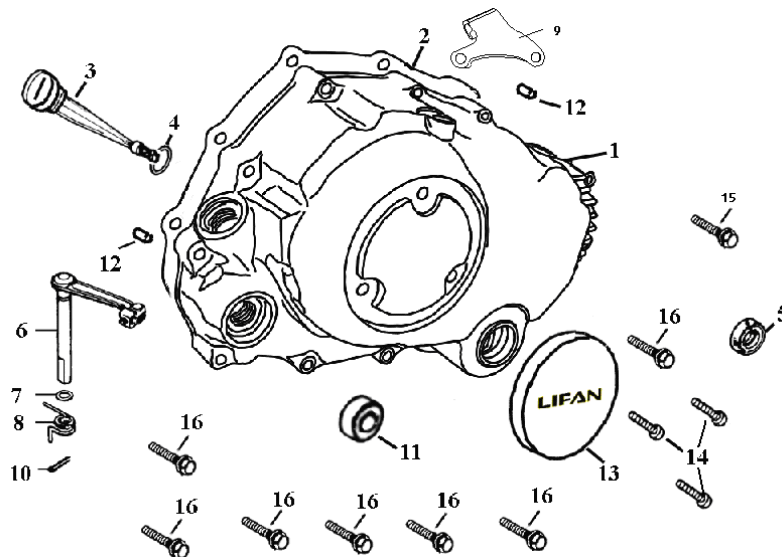
序号 S/N	零部件代号 Part No.	零部件名称	Description	数量 Quantity	备注 Remark
1	BIA14730	挡油罩	Oil seal, valve stem	2	
2	Q2540616	螺钉 M6×16	Screw, M6×16	1	
3	BLM14100	凸轮轴装配组合	Camshaft Assy	1	
4	BIA14411	气门摇臂	Rocker arm	2	
5	BIA14413	摇臂轴	Shaft, rocker arm	2	
6	BIA14137	配气凸轮轴挡板	Stopper, camshaft	1	
7	BLA14710	进气门	Valve, intake	1	
8	BLA14720	排气门	Valve, exhaust	1	
9	BIA14755	气门外弹簧	Spring, valve outer	2	
10	BIA14756	气门内弹簧	Spring, valve inner	2	
11	BIA14751	气门弹簧上座	Seat, spring upper	2	
12	BIA14753	气门外弹簧座	Seat, outer spring	2	
13	BIA14754	气门内弹簧座	Seat, inner spring	2	
14	GIA14752	气门锁夹	Split cone, valve	4	
15	GIA14415	气门间隙调节螺钉	Screw, valve clearance adjusting	2	

## E-2 配气机构 VALVE TRAIN



序号 S/N	零部件代号 Part No.	零部件名称	Description	数量 Quantity	备注 Remark
16	GIA14416	气门间隙调节螺母	Nut, adjusting	2	
17	BIA14410	摇臂装配组合	Arm Assy, rocker	2	

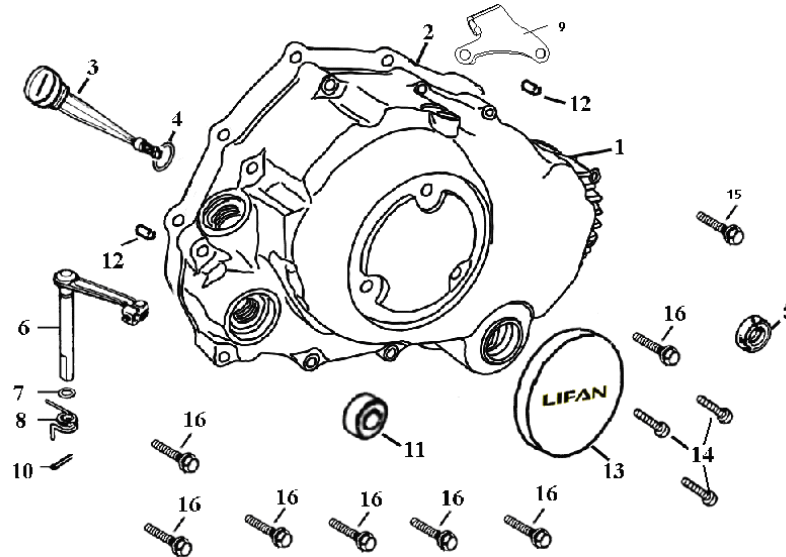
### E-3 右曲轴箱盖 RIGHT CRANKCASE COVER



序号 S/N	零部件代号 Part No.	零部件名称	Description	数量 Quantity	备注 Remark
1	GJM11310	右曲轴箱盖组合	Cover, crankcase, RH	1	
2	GJM11319	右曲轴箱盖密封垫	Gasket, crankcase cover, RH	1	
3	GIA15610	机油尺组合	Dipstick	1	
4	BIA15612	机油尺 O 型圈 $\Phi 3 \times \Phi 18$	O-ring, dipstick, $\Phi 3 \times \Phi 18$	1	
5	GIA15620	机油观察窗	Hole, oil view	1	
6	BIA22810	离合器操纵杆组合	Rod, clutch	1	
7	BIA22823	离合器操纵杆 O 型圈 ( $\Phi 1.9 \times \Phi 8.7$ )	O-ring, $\Phi 1.9 \times \Phi 8.7$	1	
8	BIA22821	离合器操纵杆弹簧	Spring, clutch rod	1	
9	GJM22824	离合器拉索调节架	Support, clutch cable	1	
10	BIA22825	离合器操纵杆定位销	Dowel pin	1	
11	GIA27190	起动轴油封 ( $16 \times 28 \times 7$ )	Oil seal, $16 \times 28 \times 7$	1	
12	PGA12218	气缸头定位销 ( $\Phi 8 \times 14$ )	Dowel pin, $\Phi 8 \times 14$	2	
13	GJM11331	右小盖	Lid, small, RH	1	
14	Q1840610F15	螺栓 $M6 \times 10$	Bolt, $M6 \times 10$	3	

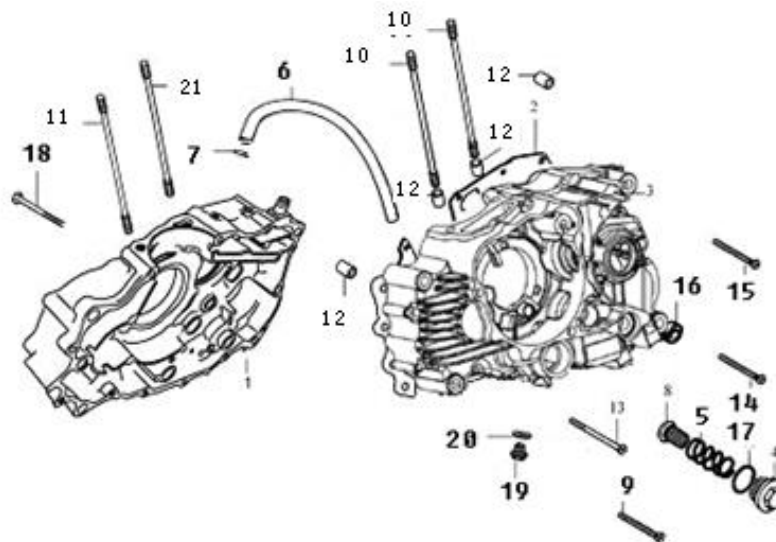


### E-3 右曲轴箱盖 RIGHT CRANKCASE COVER



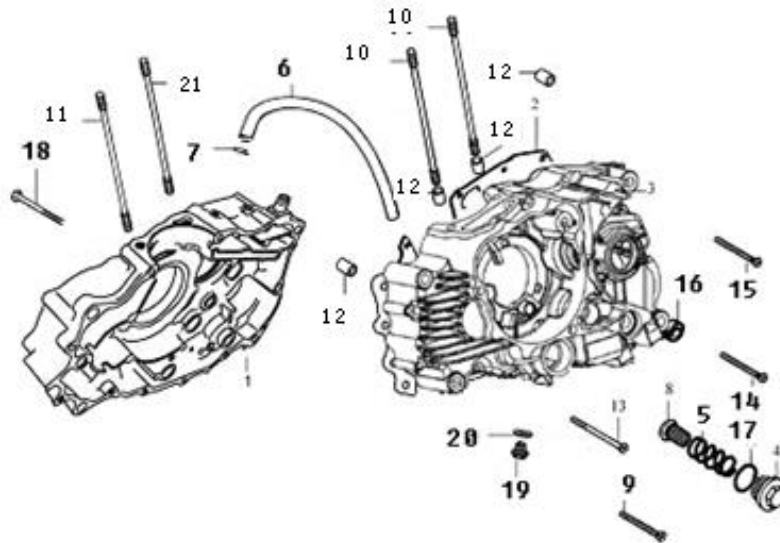
序号 S/N	零部件代号 Part No.	零部件名称	Description	数量 Quantity	备注 Remark
15	Q1840645F15	螺栓 M6×45	Bolt, M6×45	1	
16	Q1840640F15	螺栓 M6×40	Bolt, M6×40	12	

## E - 4 曲轴箱 CRANKCASE



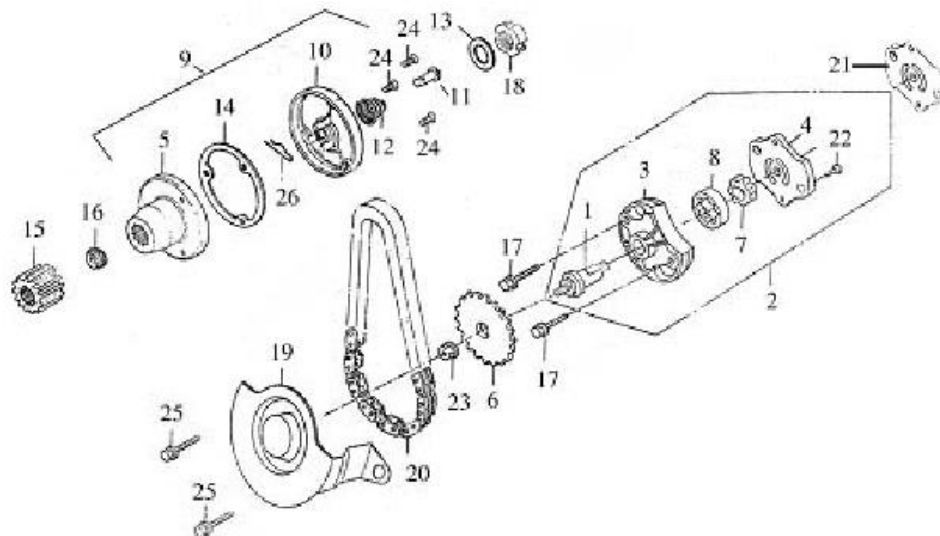
序号 S/N	零 部 件 代 号 Part No.	零 部 件 名 称	Description	数 量 Quantity	备 注 Remark
1	GLM11110	右曲轴箱组合	Crankcase, RH	1	
2	GJM11119	曲轴箱密封垫	Gasket, crankcase	1	
3	BLM11210	左曲轴箱组合	Crankcase, LH	1	
4	BIA15463	机油滤网盖	Cover, gauze filter	1	
5	BIA15461	机油滤网弹簧	Spring	1	
6	GIA20152	曲轴箱废气管	Pipe, exhaust	1	
7	GIA20153	曲轴箱废气管管夹	Clip, exhaust pipe	1	
8	BIA15450	机油滤网组合	Filter, gauze	1	
9	Q1840645F35	螺栓 M6×45	Bolt, M6×45	2	
10	BMM12343	气缸螺栓 B (M8×240)	Bolt A, M8×240	2	
11	BMM12342	气缸螺栓 A (M8×230)	Bolt B, M8×230	1	
12	GIA11118	曲轴箱定位销 (Φ10×14)	Dowel pin, Φ10×14	4	
13	Q1840665F15	螺栓 M6×65	Bolt, M6×65	1	
14	Q1840680F15	螺栓 M6×80	Bolt, M6×80	1	
15	Q1840650F15	螺栓 M6×50	Bolt, M6×50	10	

## E-4 曲轴箱 CRANKCASE



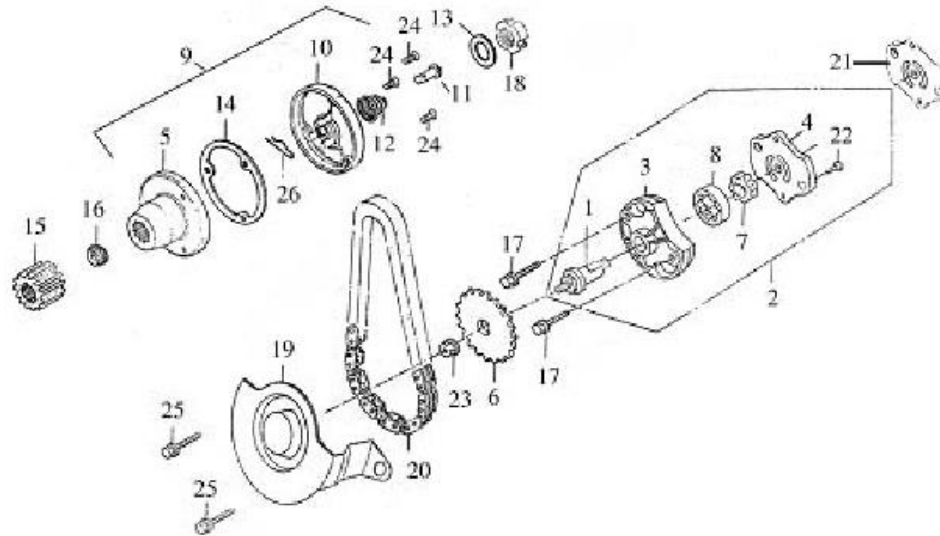
序号 S/N	零部件代号 Part No.	零部件名称	Description	数量 Quantity	备注 Remark
16	GIA24190	变档轴油封 14×28×7	Oil seal, 14×28×7	1	
17	BIA12246	气门盖 O 型圈 (Φ3×Φ35)	O-ring, Φ3×Φ35	1	
18	Q1840660F15	螺栓 M6×60	Bolt, M6×60	1	
19	PGA11212	曲轴箱放油螺塞	Plug, drain	1	
20	PGA11213	放油螺塞垫圈	Washer, drain plug	1	
21	BMM12358	气缸螺栓 C (M8×230)	Bolt C, M8×230	1	

## E-5 机油泵 机油滤清器 OIL PUMP & OIL FILTER



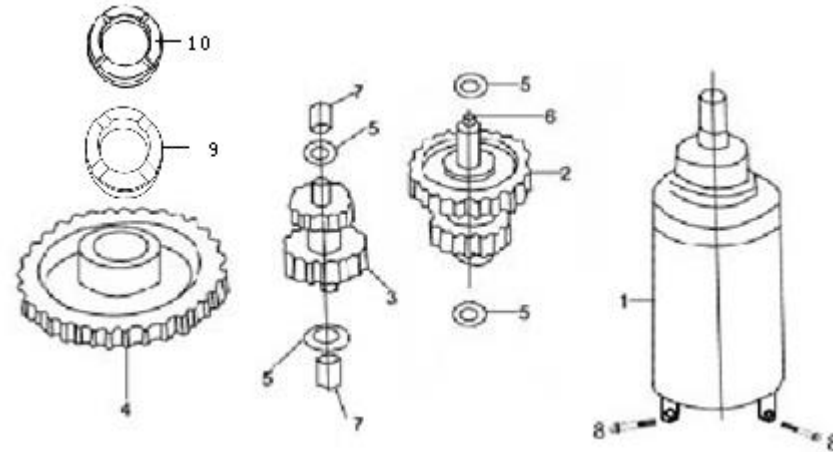
序号 S/N	零部件代号 Part No.	零部件名称	Description	数量 Quantity	备注 Remark
1	GJM15116	机油泵轴	Shaft, oil pump	1	
2	GJM15100	机油泵总成	Pump Assy, oil	1	
3	GJM15111	机油泵体	Body, oil pump	1	
4	GJM15112	机油泵盖	Cover, oil pump	1	
5	GJM15420	机油滤清器转子组合	Oil filter body	1	
6	MIX15121	机油泵从动链轮	Driven sprocket, oil pump	1	
7	GJM15114	机油泵内转子	Rotor, inner	1	
8	GJM15115	机油泵外转子	Rotor, outer	1	
9	GJM15410	机油滤清器总成	Filter Assy	1	
10	GIA15414	机油滤清器盖	Cover, oil filter	1	
11	GIA15431	曲轴通油管	Pipe, oil	1	
12	GIA15432	曲轴通油管弹簧	Spring	1	
13	GIA22632	初级主动齿轮止退垫圈	Washer, thrust	1	
14	GIA15415	机油滤清器盖密封垫	Gasket, filter cover	1	
15	GMM22621	初级主动齿轮	Gear, primary drive	1	

## E-5 机油泵、机油滤清器 OIL PUMP & OIL FILTER



序号 S/N	零部件代号 Part No	零部件名称	Description	数量 Quantity	备注 Remark
16	GJM15211	机油泵主动链轮	Sprocket, oil pump	1	
17	FB093132A1	螺栓 M6×35	Bolt, M6×35	2	
18	GIA22631	初级主动齿轮紧固螺母	locknut	1	
19	GJM15031	机油泵传动链条限位板	Limiter, oil pump chain	1	
20	GJM15140	机油泵传动链条	Chain, oil pump	1	
21	GJM15131	机油泵密封垫	Gasket, oil pump	1	
22	Q2140308F15	螺钉 M3×8	Screw, M3×8	1	
23	Q32006F15	螺母 M6	Nut, M6	1	
24	Q2540512F35	螺钉 M5×12	Screw, M5×12	3	
25	Q1840612F35	螺栓 M6×12	Bolt, M6×12	2	
26	GIA15413	机油滤清器弹簧卡	Clip, spring	1	

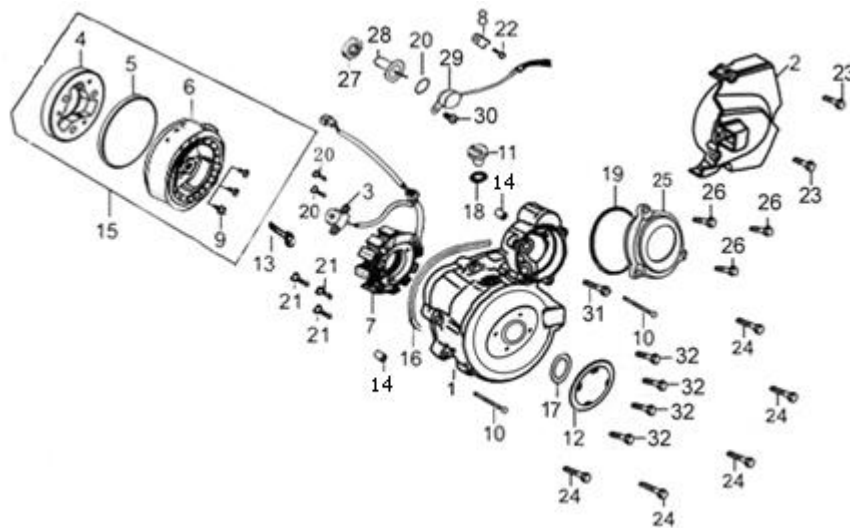
## E-6 起动电机 STARTING MOTOR



序号 S/N	零部件代号 Part No.	零部件名称	Description	数量 Quantity	备注 Remark
1	GIA34700	起动电机总成	Motor Assy, starting	1	
2	GLX28311A1	双联齿轮	Dual-gear	1	
3	GKA28331	双联齿轮 II	Dual-gear II	1	
4	SLM28150	起动离合器齿轮组合	Gear set, starting clutch	1	
5	GIA28312	双联齿轮垫圈	Washer, dual-gear	4	
6	GIA28320	双联齿轮轴组合	Shaft, dual-gear	1	
7	Q9611010	滚针轴承 HK101410	Bearing, HK101410	2	
8	Q1840628F15	螺栓 M6×28	Bolt, M6×28	2	
9	BLA28172	起动离合器齿轮垫圈	Washer	1	
10	BLM28172	起动离合器齿轮垫圈	Washer	1	

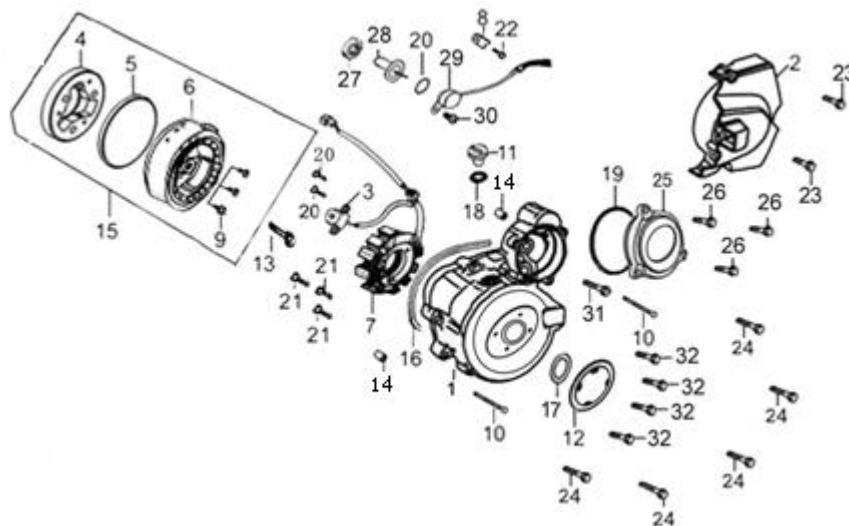


## E-7 磁电机 MAGNETO



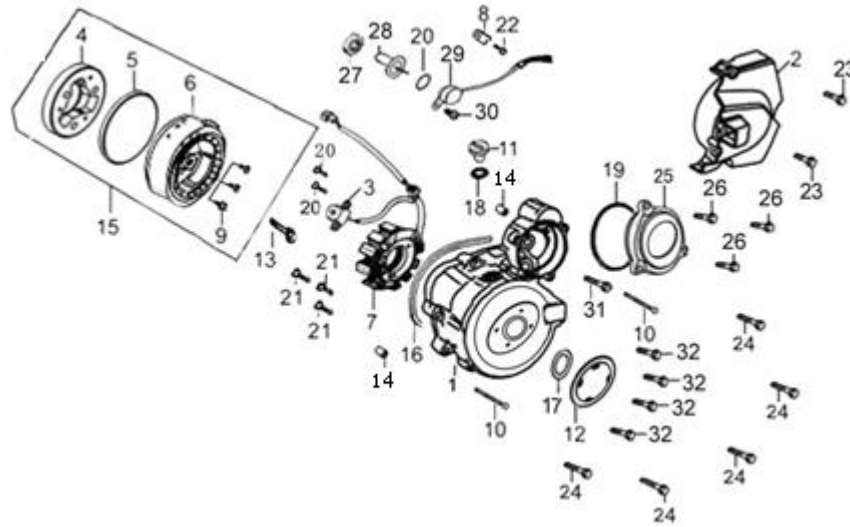
序号 S/N	零部件代号 Part No.	零部件名称	Description	数量 Quantity	备注 Remark
1	GIA11411	左曲轴箱盖	Cover, crankcase, LH	1	
2	GIA11451	左后盖	Cover, rear, LH	1	
3	GIA31280	触发线圈	Coil, induced	1	
4	GLX28110	起动离合器装配组合	clutch comp., starting	1	
5	GIA28114	起动离合器盖板	Cover, starting clutch	1	
6	GLA31110	磁电机转子组合	Rotor comp., magneto	1	
7	GIA31210	磁电机定子组合	Stator comp., magneto	1	
8	GIA31928	磁电机线束挡板	Stopper, wire clamp	1	
9	Q2180818F91	螺钉 M8×18	Screw, M8×18	3	
10	Q1840650F15	螺栓 M6×50	Bolt, M6×50	2	
11	BLA11412	观察孔螺塞	Plug, view hole	1	
12	GIA11431	左小盖	Lid, LH	1	
13	GIA31913	磁电机螺栓	Bolt, magneto	1	
14	GIA11118	曲轴箱定位销(Φ10×14)	Dowel pin, Φ10×14	2	
15	GLA31102	磁电机转子装配组合	Rotor comp., magneto	1	
16	GIA11419	左曲轴箱盖密封垫	Gasket, crankcase cover, LH	1	

## E-7 磁电机 MAGNETO



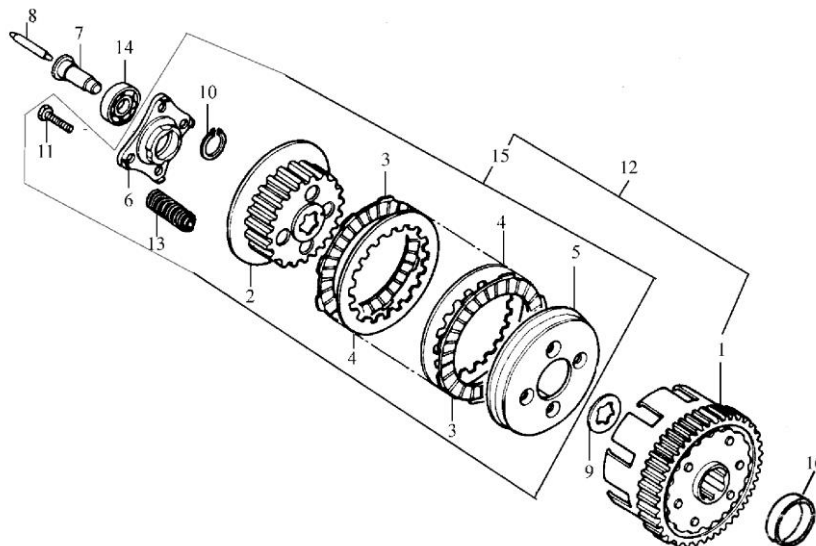
序号 S/N	零部件代号 Part No.	零部件名称	Description	数量 Quantity	备注 Remark
17	BIA11415	螺塞 0 型圈 27.5×2.5	O-ring, plug, 27.5×2.5	1	
18	BIA11414	观察孔螺塞 0 型圈 13.8×2.5	O-ring, view hole plug, 13.8×2.5	1	
19	GIA11422	过轮盖 0 型圈 63×3	O-ring, 63×3	1	
20	Q1860516F35	螺栓 M5×16	Bolt, M5×16	2	
21	Q1840530F35	螺栓 M5×30	Bolt, M5×30	3	
22	Q1840612F35	螺栓 M6×12	Bolt, M6×12	1	
23	Q1840628F15	螺栓 M6×28	Bolt, M6×28	2	
24	Q1840640F15	螺栓 M6×40	Bolt, M6×40	5	
25	GIA11421	过轮盖	Cover, idler	1	
26	Q1840620F15	螺栓 M6×20	Screw, M6×20	3	
27	GIA35740	档位指示器油封	Oil seal, neutral indicator	1	
28	GIA35760	档位显示触点组合	Trigger, gear	1	
29	GIX35730A1	档位线组合	Wire harness, gear	1	
30	Q174B0418F32	螺栓 M4×18	Bolt, M4×18	2	

## E-7 磁电机 MAGNETO



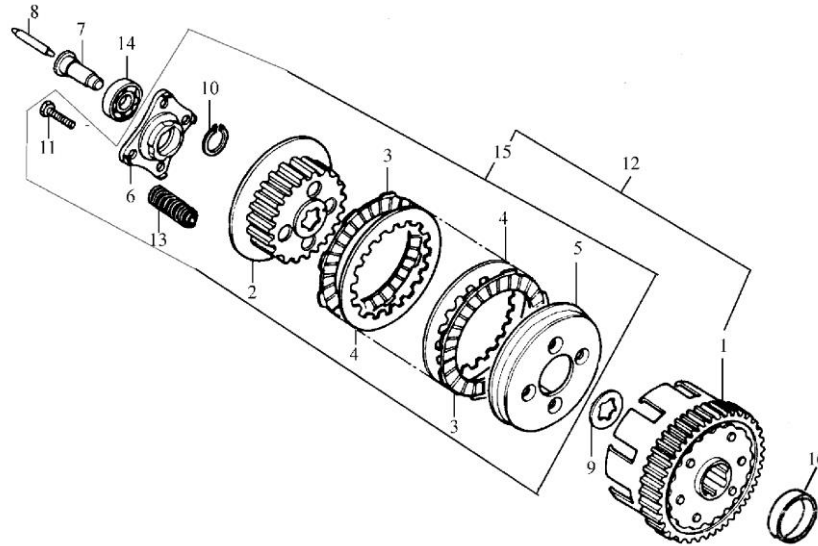
序号 S/N	零部件代号 Part No.	零部件名称	Description	数量 Quantity	备注 Remark
31	Q1840625F15	螺栓 M6×25	Bolt, M6×25	1	
32	Q1840614F15	螺栓 M6×14	Bolt, M6×14	4	

## E-8 离合器 CLUTCH



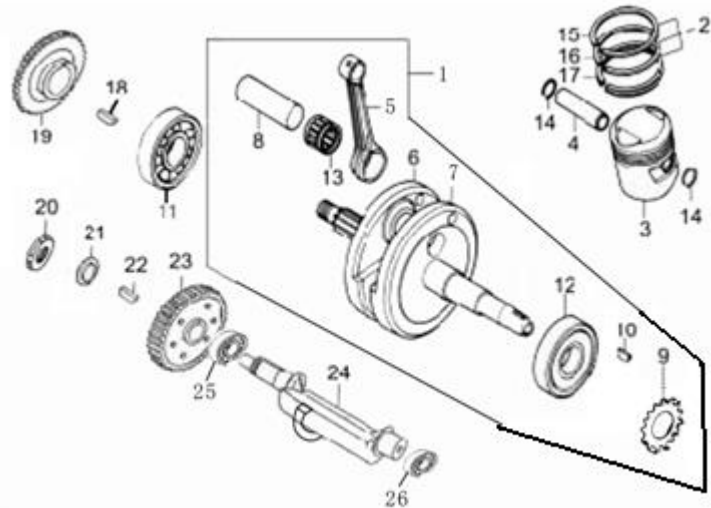
序号 S/N	零部件代号 Part No.	零部件名称	Description	数量 Quantity	备注 Remark
1	BIA22110	离合器主动盘组合	Outer comp., clutch	1	
2	BLA22320	离合器从动盘组合	Center comp., clutch	1	
3	BLA22330	离合器主动片组合	Disc comp., clutch friction	6	
4	BLA22341	离合器从动片	Disc, clutch driven	5	
5	BLA22351	离合器压板	Plate, clutch pressure	1	
6	GIA22361	离合器端盖	Bolt, clutch	1	
7	BIA22861A1	离合器推杆	Pusher, clutch	1	
8	BIA22871A1	离合器顶杆	Mandrel, clutch	1	
9	GIA22372	离合器花键垫圈	Washer, clutch spline	1	
10	Q43117	挡圈 17	Circlip, 17	1	
11	Q150D0620F35	螺栓 M6×20	Bolt, M6×20	6	
12	GLA22100	离合器主体组合	Body, clutch	1	
13	BLA22371	离合器弹簧	Spring	6	
14	Q96516003	轴承 16003	Bearing, 16003	1	
15	GLA22310	离合器从动盘装配组合	Center comp., clutch	1	

## E-8 离合器 CLUTCH



序号 S/N	零部件代号 Part No.	零部件名称	Description	数量 Quantity	备注 Remark
16	GJM22622	初级主动齿轮衬套	Bush, primary drive gear	1	

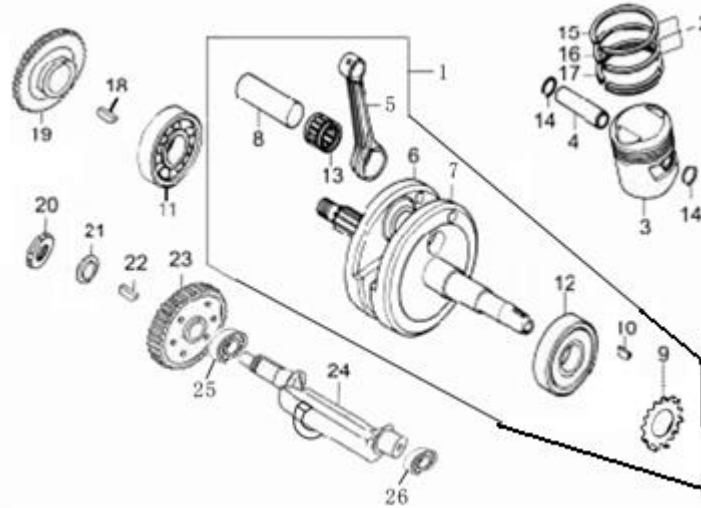
## E-9 曲轴、活塞 CRANKSHAFT & PISTON



序号 S/N	零 部 件 代 号 Part No.	零 部 件 名 称	Description	数 量 Quantity	备 注 Remark
1	BMM13100	曲柄连杆组合	Crankshaft & connecting rod	1	
2	BLM13300A2	活塞环组	Piston ring, 3-piece	1	
3	BLM13211	活塞	Piston	1	
4	BIA13221	活塞销	Pin, piston	1	
5	BMM13131	连杆	Rod, connecting	1	
6	BMM13121	右曲柄	Crank, RH	1	
7	BMM13111	左曲柄	Crank, LH	1	
8	BLA13140	曲柄销组合	Pin, crank	1	
9	BIA14211	正时主动链轮	Sprocket, timing drive	1	
10	GIA13118	曲轴半圆键	Key, woodruff	1	
11	BLA13170	曲轴右轴承	Bearing, crankshaft, RH	1	
12	BLA13160	曲轴左轴承	Bearing, crankshaft, LH	1	
13	BLA13150	连杆大头轴承	Bearing, roller	1	
14	GIA13222	活塞销挡圈	Circlip, piston pin	2	
15	BLM13311A2	活塞环 I	Piston I, piston	1	

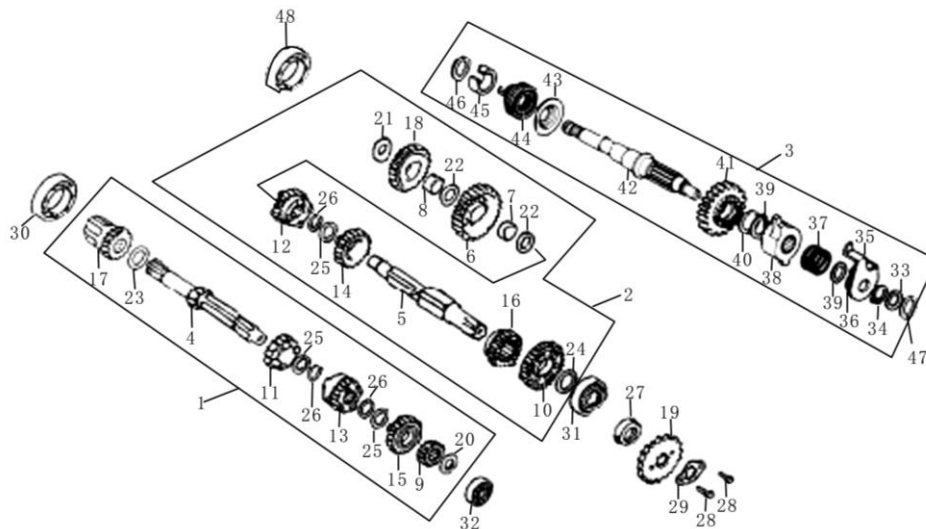


## E-9 曲轴、活塞 CRANKSHAFT & PISTON



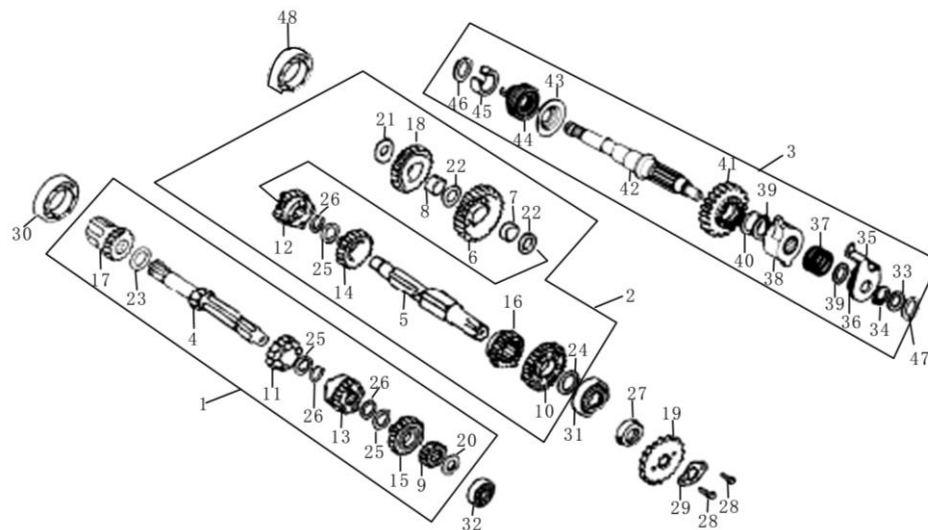
序号 S/N	零部件代号 Part No.	零部件名称	Description	数量 Quantity	备注 Remark
16	BLM13312A1	活塞环 II	Piston ring II	1	
17	BLM13320A2	油环组合	Oil ring, 3-piece	1	
18	GJM13632	平衡轴主动齿轮销键	Pin, balance shaft drive gear	1	
19	GJM13631	平衡主动齿轮	Gear, balance shaft drive	1	
20	GJM13651	平衡轴从动齿轮紧固螺母	Locknut, balance shaft driven gear	1	
21	GJM13652	平衡轴垫圈	Washer, balance shaft	1	
22	GJM13655	平衡轴键	Key, balance shaft	1	
23	GJM13640	平衡从动齿轮组合	Gear comp., balance shaft drive	1	
24	GMM13611	平衡轴	Shaft, balance	1	
25	Q9656303	滚动轴承 6303	Bearing, 6303	1	
26	Q9656203	轴承 6203	Bearing, 6203	1	

# E-10 传动装置 TRANSMISSION



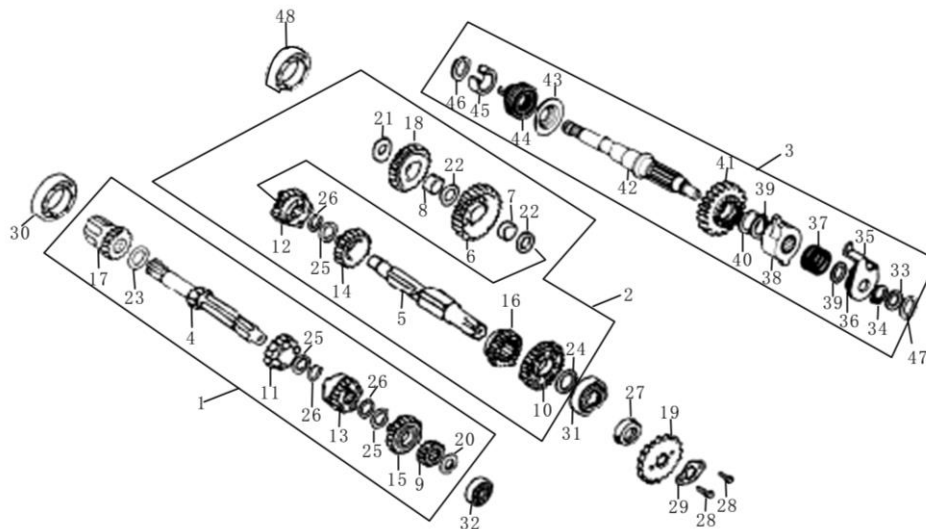
序号 S/N	零 部 件 代 号 Part No.	零 部 件 名 称	Description	数 量 Quantity	备 注 Remark
1	BLM23600	主轴组合	Main shaft Assy	1	
2	BLM23700	副轴组合	Countershaft Assy	1	
3	GIA27100	起动轴总成	Start shaft Assy	1	
4	GMM23611	主轴	Main shaft	1	
5	GIA23771	副轴	Countershaft	1	
6	GMM23711	副轴一档齿轮	1st gear, countershaft	1	
7	GIA23712	副轴一档齿轮衬套	Bush	1	
8	GIA27223	起动过桥齿轮衬套	Bush	1	
9	GMM23621	主轴二档齿轮	2nd gear, main shaft	1	
10	GMM23721	副轴二档齿轮	2nd gear, countershaft	1	
11	BLM23631	主轴三档齿轮	3rd gear, main shaft	1	
12	BLM23731	副轴三档齿轮	3rd gear, countershaft	1	
13	BLM23641	主轴四档齿轮	4th gear, main shaft	1	
14	BLM23741	副轴四档齿轮	4th gear, countershaft	1	
15	BLM23651	主轴五档齿轮	5th gear, main shaft	1	

## E-10 传动装置 TRANSMISSION



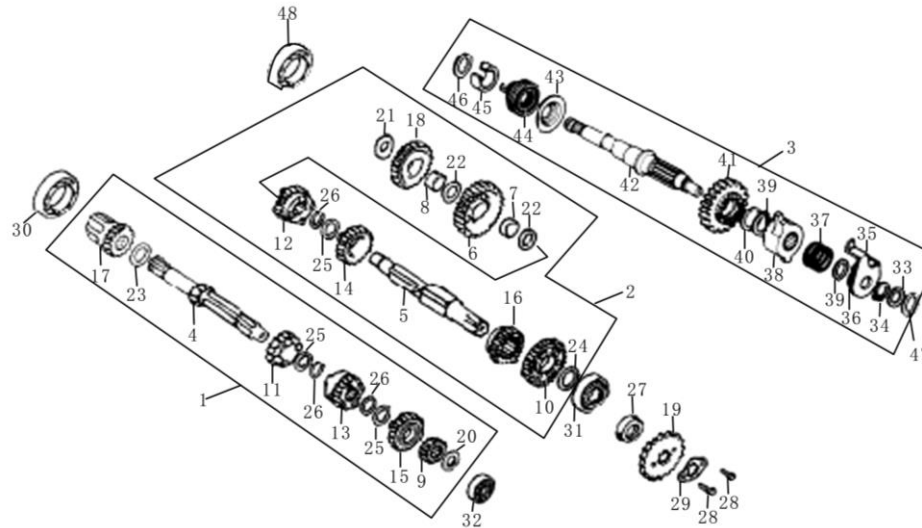
序号 S/N	零部件代号 Part No.	零部件名称	Description	数量 Quantity	备注 Remark
16	BLM23751	副轴五档齿轮	Gear, countershaft 5th	1	
17	GJM27230	起动从动齿轮组合	Gear set, starting driven	1	
18	GIA27221	起动过桥齿轮	Gear set, conveying	1	
19	GIA22711	输出链轮	Sprocket, output	1	
20	GIA23674	主轴垫圈 (15×25×1.0)	Washer (15×25×1.0)	1	
21	GIA27224	起动过桥齿轮垫圈 (15×30×1.0)	Washer (15×30×1.0)	1	
22	GIA23773	副轴垫圈 (16.5×24×0.5)	Washer (16.5×24×0.5)	2	
23	GIA27233	起动从动齿轮垫圈 (20×26.5×0.5)	Washer (20×26.5×0.5)	1	
24	GIA23774	副轴垫圈 II (20×26×1.0)	Washer II (20×26×1.0)	1	
25	GIA23675	内花键垫圈	Washer, inner spline	3	
26	GIA23672	轴用弹性挡圈 20	Circlip, 20	3	
27	GIA23790	副轴油封 20×34×7	Oil seal, 20×34×7	1	
28	Q150D0610	螺栓 M6×10	Bolt, M6×10	1	
29	GIA22712	链轮固定板	Plate, sprocket locating	1	
30	Q9656006P6	轴承 6006 (30×55×13)	Bearing, 6006 (30×55×13)	1	

## E-10 传动装置 TRANSMISSION



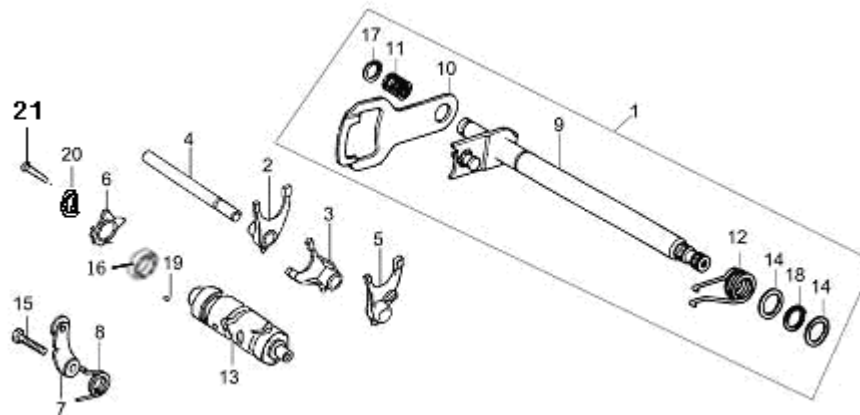
序号 S/N	零 部 件 代 号 Part No.	零 部 件 名 称	Description	数 量 Quantity	备 注 Remark
31	Q9656204P6	轴承 6204 (47×20×14)	Bearing, 6204 (47×20×14)	1	
32	Q965D6202	轴承 6202 RS (15×35×11)	Bearing, 6202 RS (15×35×11)	1	
33	Q43116F91	挡圈 16	Circlip, 16	1	
34	Q43124F91	挡圈 24	Circlip, 24	1	
35	GIA27155	摩擦弹簧限位板	Limiter, spring	1	
36	GIA27133	起动过桥齿轮限位板	Limiter, mid-gear	1	
37	GIA27152	起动齿轮摩擦弹簧	Spring	1	
38	GIA27113	棘轮	Ratchet	1	
39	GIA27142	起动轴弹性挡圈	Circlip	2	
40	GIA27114	起动轴垫圈 I	Washer (1)	1	
41	GIA27151	起动齿轮	Gear, starting	1	
42	GIA27111	起动轴	Shaft, starting	1	
43	GIA27117	起动轴弹簧座	Base, spring	1	
44	GIA27118	起动回位弹簧	Spring, reset	1	
45	GIA27119	起动轴轴环	Sleeve	1	

# E-10 传动装置 TRANSMISSION



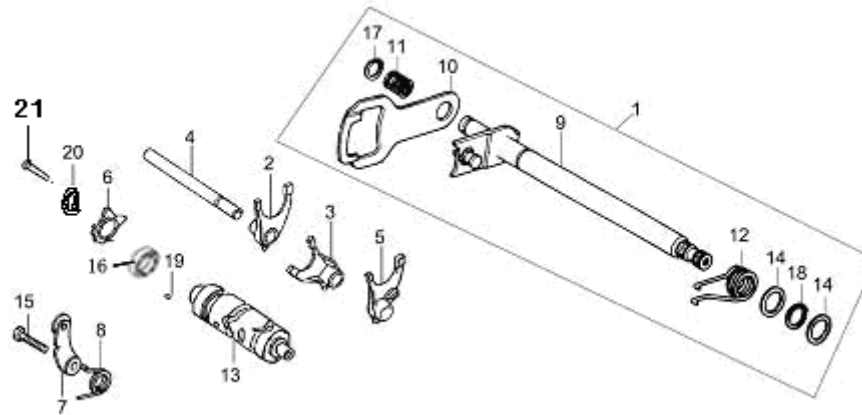
序号 S/N	零部件代号 Part No.	零部件名称	Description	数量 Quantity	备注 Remark
46	GIA27141	起动轴垫圈 II	Washer, II	1	
47	GIA27144	起动轴垫圈 III	Washer, III	1	
48	Q9611512	滚针轴承 HK152312	Bearing, needle, HK152312	1	

## E-11 变档机构 GEARSHIFT DEVICE



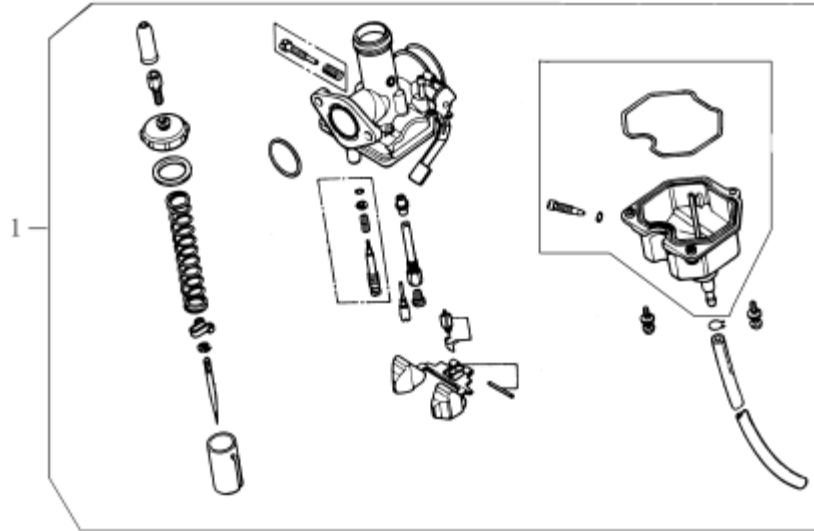
序号 S/N	零部件代号 Part No.	零部件名称	Description	数量 Quantity	备注 Remark
1	GIA24100	变档轴总成	Shaft Assy, gearshift	1	
2	GIA24411	拨叉 I	Fork, I	1	
3	GIA24412	拨叉 II	Fork, II	1	
4	GIA24421	变档拨叉轴	Shaft, fork	1	
5	GIA24413	拨叉 III	Fork, III	1	
6	GIA24221	变档轮	Cam	1	
7	GIA24310	档位定位板组合	Plate, setting	1	
8	GIA24323	定位板扭簧	Spring	1	
9	GIA24110	变档轴组合	Shaft, gearshift	1	
10	GIA24121	变档拨板	Shifter	1	
11	GIA24122	变档拨板弹簧	Spring, shifter	1	
12	GIA24123	变档轴回位弹簧	Spring, gearshift shaft return	1	
13	GIA24211	变档凸轮	Drum	1	
14	GIA24124	变档轴垫圈	Washer	2	
15	Q150D0620T	螺栓 M6×20	Bolt, M6×20	1	

## E-11 变档机构 GEARSHIFT DEVICE



序号 S/N	零 部 件 代 号 Part No.	零 部 件 名 称	Description	数 量 Quantity	备 注 Remark
16	GIA93840	滚针轴承 HKS 212810	Bearing, needle, HKS212810	1	
17	Q43112	弹性挡圈 12	Circlip, 12	1	
18	Q43114	弹性挡圈 14	Circlip, 14	1	
19	GIA24222	变档定位销 4×10	Dowel pin, 4×10	1	
20	FB093571	弹簧垫圈 6×2	Washer, 6×2	1	
21	Q150D0625	螺栓 M6×25	Bolt, M6×25	1	

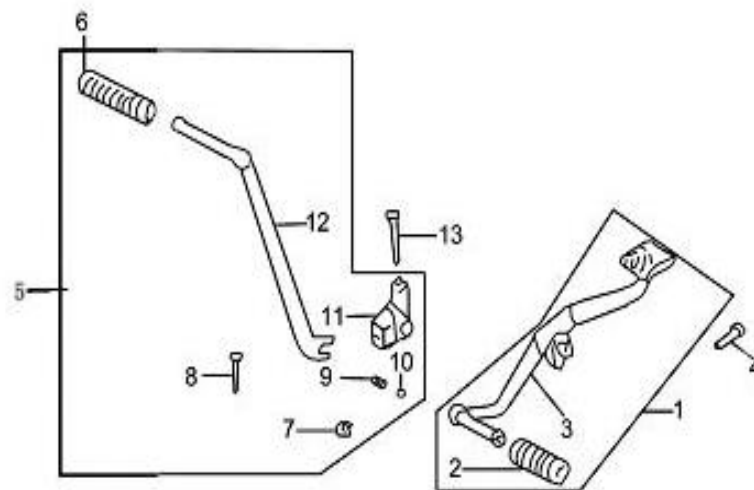
## E-12 化油器 CARBURETOR



序号 S/N	零部件代号 Part No.	零部件名称	Description	数量 Quantity	备注 Remark
1	GLA16100	化油器总成	Carburetor Assy	1	

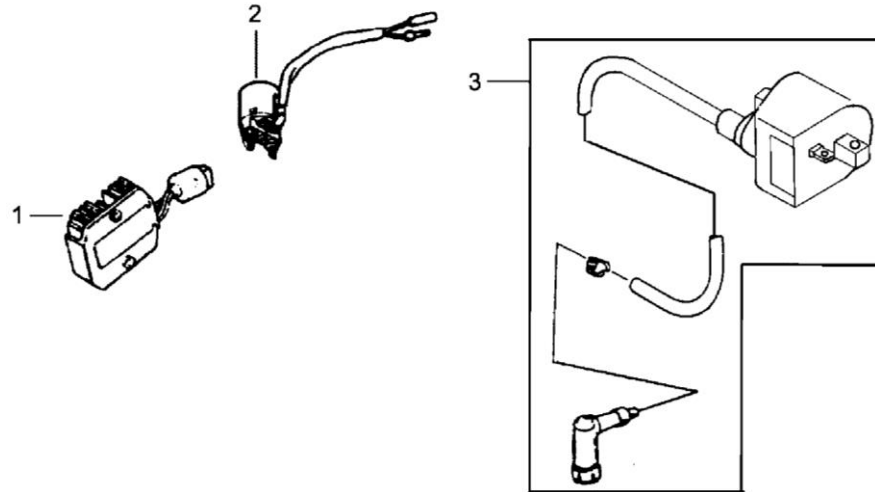


## E-13 变档杆、起动杆 GEARSHIFT PEDAL & STARTING ARM



序号 S/N	零部件代号 Part No.	零部件名称	Description	数量 Quantity	备注 Remark
1	GIA24700	变档杆总成	Pedal Assy, gearshift	1	
2	GIA24711	变档杆胶套	Boot	1	
3	GIA24720	变档杆焊接组合	Rod weldment, gearshift	1	
4	Q150D0622	螺栓 M6×20	Bolt, M6×20	1	
5	GIA27700	起动杆总成	Arm Assy, starting	1	
6	GIA27713	起动踏杆胶套	Boot, starting rod	1	
7	Q43112	挡圈 13	Circlip, 13	1	
8	GIA27715	起动杆销轴	Pivot	1	
9	GIA27714	起动杆弹簧	Spring	1	
10	Q960600	钢球 6	Ball,6	1	
11	GIA27712	起动踏杆接头	Joint, starting rod	1	
12	GIA27711	起动踏杆	Rod, starting	1	
13	Q150D0840	螺栓 M8×40	Bolt, M8×40		

## E-14 电器 ELECTRIC ELEMENTS



序号 S/N	零部件代号 Part No.	零部件名称	Description	数量 Quantity	备注 Remark
1	GIA31600	电压调节器	Rectifier	1	
2	GIA34600	起动继电器	Relay, starting	1	
3	GIA34500	点火线圈	Coil, ignition	1	